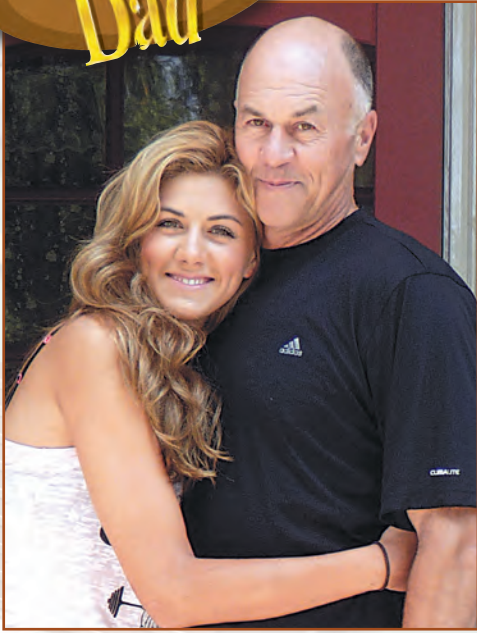


One We Missed



Due to an error on our part, last month's *Alive!* tribute to Club fathers was missing one entry, from Shelley Garcia, for Kenneth Mattfeld, City Attorney/Harbor. Our apologies. – Ed.



Here are Perry (daughter) and Ken Mattfeld, in the last photo taken before Perry moves off to college (USC). "Ken is choking back tears, so proud of his beautiful girl. Happy Father's Day, Papa."

– Shelley Garcia, mother of Perry

"Even though I'm almost as tall as you, I'll always be your little girl. To the best Trojan Papa, Happy Father's Day!"

– Perry Mattfeld

REC AND PARKS

Banning Seeks Volunteers

The Banning Museum seeks volunteers and will host two Get to Know Us receptions from 11 a.m. to 12:30 p.m. Friday and Saturday, Aug. 23 – 24. The receptions will be held in the conference room at the Banning Museum, 401 East "M" Street, in Wilmington.

Volunteers at the Banning Museum attend a training class to gain the background necessary to offer public tours and special group tours of the interior of the museum, Stagecoach Barn and grounds.

Once the training class is completed, the volunteers are able to participate in a full range of museum including conservation and maintenance of antiques, participating in decorative

arts exhibitions, special events, Museum Shop assistance, lecture and discussion committees, volunteer activities, Living History Program and School Program.

The Museum's School Program is designed to introduce fourth-grade students to local cultural and historical heritage and may require additional training to familiarize new volunteers to the program details.

For additional information or to RSVP for one of the receptions above, contact Melanie Streitfeld, (310) 548-2005.

The Banning Museum is Rec and Parks facility and is operated in cooperation with Friends of Banning Museum, a nonprofit corporation.



GET WET!

At Raging Waters, Hurricane Harbor, Knott's Soak City.

All new Club deals!

– SEE PAGE 45

THANKS FOR YOUR PUBLIC SERVICE.



Thanks for being part of what makes California great. Get a discount on monthly service plans because of where you work.

This discount is available to all employees working at the State or Local level within the State of California.



Trade in your old phone from any carrier. Get account credit for eligible devices through the Sprint Buyback Program. Visit sprint.com/buyback for details.



18%

DISCOUNT FOR EMPLOYEES OF LA CITY EMPLOYEES ASSOCIATION

Applies to select regularly priced Sprint monthly service plans. Req. new 2-yr agmt.

ACTIVATION FEE WAIVED FOR NEW ACTIVATIONS

Up to \$36 value. Req. new 2-yr agmt.

LA City: sprint.com/lacityemployees Visit local Sprint Store: sprint.com/storelocator
 Utilities: sprint.com/californiapublicutilities State/Local/City/County of LA: GLSCA_WCA_ZZZ
 LA County: sprint.com/lacountyemployees Utilities: UTSCA_WCA_ZZZ
 State/Local: sprint.com/californialocalgovernment
 Call: 866-639-8354

Use this code to claim your discount.
 Corporate ID: See above for code



Sprint is an authorized wireless vendor for the State of California.

Activ. Fee: \$36/line. Credit approval req. Early Termination Fee (sprint.com/etf): After 14 days, up to \$350/line. Gov't Employee Discount: Available for eligible employees of gov't agencies participating in the discount program. Discounts subject to change according to the agency's agreement with Sprint and are available upon request for monthly svc charges on select plans. No discounts apply to second lines. Add-A-Phone lines or add-ons \$29.99 or less. Sprint Buyback: Limit of 3 returned devices per active mobile number during one 12 month period. Phone must be deactivated and all personal data deleted before recycling. Device will not be returned. Credit varies depending on phone condition and valuation. Credit applied to store purchase or account within 3 invoices. Also available at sprintbuyback.com. Other Terms: Sprint reserves the right to modify, extend or cancel offers at any time. Offers and coverage not available everywhere or for all phones/networks. Restrictions apply. Nationwide Sprint Network reaches over 283 million people. See store or sprint.com for details. ©2013 Sprint. All rights reserved. Sprint and the logo are trademarks of Sprint. Other marks are the property of their respective owners. N065466