

CITY EMPLOYEES AT WORK



Repairing a fire hydrant at Second and Spring Street downtown are, from left: **Tommy Gibbs**, Water Utility Worker, 14 years of City service; and **Vernon Chesterton, Sr.**, Water Utility Worker, 8 years.



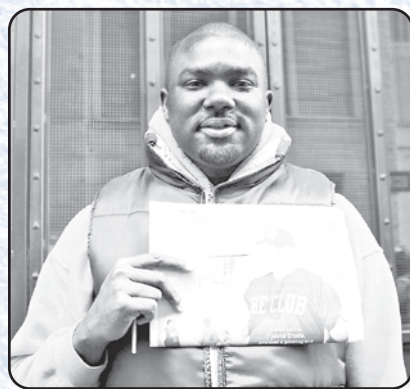
William Flowers, Airport Maintenance Supervisor, 27 years of City service, Club Member, supervises Airport custodial operations in Terminal 4 and the Tom Bradley International Terminal at LAX.



Here's a photo of Rec and Parks employees working on an irrigation system near the Cabrillo Marine Aquarium in San Pedro. From left: **Traci Rubner, Sr.** Gardner, 9 years of City service; and **Frank Holmes**, Irrigation Specialist, 1 year.



Brandon Brookman, Heavy Duty Truck Operator, Street Services, 4 years of City service.



Langston A. Phillips, Public Works/Street Services, Club Member.



These employees work in the Transportation coin room. They are responsible for counting the revenue taken in from the City's parking meters. They are, from left: **Stanley Barr**, Maintenance Laborer, 7 years of City service; **Elvin Galindo**, Sr. Transportation Investigator, 23 years; **Larry Ortiz**, 12 years; **Aida Martinez**, 8 years; and **Sabrina Peters**, 11 years.

Do you have a photo of City Employees on the job? Send it in and we might print it! talkback@cityemployeesclub.com

THIS MONTH AT THE

Cabrillo Marine Aquarium

Feb. 4-5, 18-19:

Weekend Tidepool Walk

12:30 – 2 p.m.

CMA's Education Staff conducts tours of the Point Fermin State Marine Park. Attend an informative slide show in the John M. Olguin Auditorium, then come along on the naturalist-led ramble on the rocks to see animals in their natural habitat. Outdoor clothing and sneakers advised. Young children must be accompanied by adults. Reservations required for groups.

This is a free event open to everyone.

Fee: Free
www.cabrillomarineaquarium.org



REC AND PARKS

A Banning Valentine

Banning Museum to host luncheon and tea with Valentine theme.

Friends of Banning Museum will hold its seventh annual Valentine's *Tea & Tunes* on Sat., Feb. 11 from 1 to 3 p.m. This popular event will take place at The Banning Museum, 401 East "M" Street, in Wilmington.

Those attending Valentine's *Tea & Tunes* will enjoy celebrating Valentine's Day with an elegant light luncheon and a special selection of teas. A presentation, "The Language of Flowers in Victorian Times" by Rosarian Gloria Leinbach will kick off the luncheon. Live entertainment will be provided by award-winning harpist and recording artist Shawna Selline. Complimentary tours of the Museum, Red Cars Exhibit, new transportation exhibition and special exhibition assembled especially for this event will follow the program.

Reservations are required for Valentine's *Tea & Tunes* and space is limited. The cost is \$50 for Friends of Banning Museum members and \$60 for non-members. Please call Friends of Banning Museum at (310) 548-2005 for reservations or for further information.

Friends of Banning Museum is a nonprofit corporation founded to develop the historic Banning Museum. Our mission is to "Preserve History, Promote Education, and Inspire Entrepreneurial Spirit."

The Banning Museum is a

facility of Rec and Parks and is operated in cooperation with Friends of Banning Museum.



To my Valentine