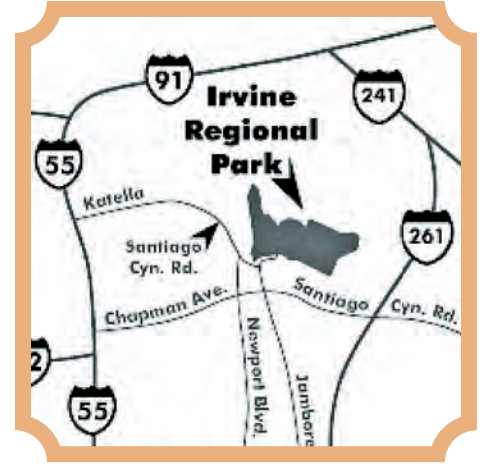


# Irvine Regional Park: Bike Path

— Irvine, Calif.



Angel Jr. gives us the "thumbs up" along the path.

## Hello again, everybody!

This month, we traveled to the city of Orange. Irvine Regional Park is nestled amongst a grove of heritage oak and sycamore trees. The rolling foothills surrounding the park are filled with a variety of wildlife. Trees and shaded turf areas provide a serene setting for leisure activities. Santiago Creek bisects the park and a pond with a stonework waterfall, and a footbridge is located in the center of the park. The variety of landscape greatly enhances the park's beauty.

## Let's begin!

**HISTORY:** Irvine Park was part of Don Teodosio Yorba's original Mexican grant of Rancho Lomas de Santiago. The first recreational use of the oak grove was by the early German colonists who settled Anaheim in 1857, and the area became known as the "Picnic Grounds."

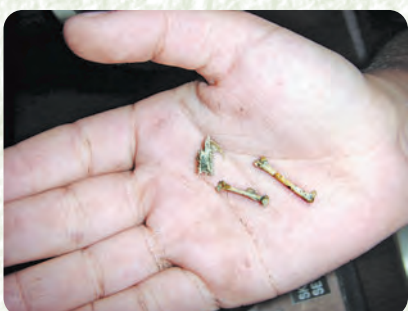
In 1876, the grove and the surrounding rancho became the sole property of James Irvine, who had bought out his partners. Seven years after his father's death, James Jr. decided to give the county its first park.

The early 1920s saw some park improvements including wooden picnic tables and restrooms. Commercial electricity was not available till the mid-1920s.

The park underwent a major renovation and redevelopment in 1982-83. This included restoring the old buildings; redevelopment of the three group picnic areas; addition of three playgrounds and horseshoe pits; new turf and landscape; and relocating the roadways. A new zoo facility was also constructed,



Paddleboats at Irvine Park.



Aden found a small jaw bone and two thigh bones.

We stopped by the Irvine Regional Park Zoo.





## Irvine Regional Park Bike Path

1 Irvine Park Road, Orange, CA 92869  
(714) 973-6835 or (714) 973-3173

**BIKE PATH ACTIVITIES:**  
walking, jogging, skating, rollerblading, and bicycling.

**AREA:** 477-acre park

**DISTANCE:** Various routes

**DIFFICULTY RATING:** Easy

**BIKE TIME:** 1 to 2 hours

**TRAIL CONDITION:** Asphalt

**OTHER HIGHLIGHTS:**  
Barbeques/fire rings, botanical preserve, equestrian trails, family picnic area, fishing, horseback riding, interpretive center, paddleboat rental, train rides, softball fields, and lots of pavilion areas.

**FALL & WINTER HOURS:**  
6 a.m. to 6 p.m.

**SPRING & SUMMER HOURS:**  
6 a.m. to 9 p.m.

**PARKING:**  
\$3 (weekdays), \$5 (weekends)

**DIRECTIONS:** Irvine Regional Park is in Santiago Canyon, six miles east of the City of Orange. To reach the park, take the Newport (55) Freeway to the Chapman Avenue east offramp. Head east on Chapman for approximately five miles. Turn left on Jamboree for one fourth a mile to the park entrance.



*Angel's*  
**Be Alive!**

Send your photos to me at [agomez@cityemployeesclub.com](mailto:agomez@cityemployeesclub.com)  
I would love to see them!

**Angel Gomez,**  
Club Director of Sales



Angel and Aden inside the interpretive center, standing in front of a small bear exhibit.



Aden in front of the Native American display.



Irvine Regional Park, "California's first county park."

## The Interpretive Center at Irvine Regional Park

which includes a children's barnyard area and native animal exhibits. 1983 also brought the listing of the park on the National Registry of Historic Places.

An interpretive center has been constructed in the historic exhibit hall. It has displays featuring the park areas; natural, cultural, historical, and recreational resources; and includes an audiovisual theater for interpretive presentations.

Throughout its history, Irvine Park has housed a wide range of animals. William A. Kinsley succeeded Fay Irwin as superintendent in 1960. He built up a compound of birds and animals, which became known as the park's zoo.

playing outdoor activities, or even going to the zoo. This is one of those parks you need to visit at least three for four times to get all the fun it has to offer. Thank you, Irvine Regional Park. We all had a wonderful time.

Bring water, snacks and maybe some sunscreen.



Aden looks through owl pellets.



Angel Jr. in front of footprint display.

Don't forget to bring your camera. Take plenty of photos and send them to me at [agomez@cityemployeesclub.com](mailto:agomez@cityemployeesclub.com).

**As always,  
be safe and Be Alive!,  
Angel**

## The Bike Ride

Irvine Park is very nice, and there was much to see. I loved the variety of all the activities. There's a wonderful bike path (be careful of cars, though). There's plenty of room to do almost any activity, but on a very busy weekend all the areas are full, so arrive early. We all had a fine time looking at a variety of scenic views along the way. My wife was really nervous because our youngest, Aden, is still learning how to ride in crowded places, but we made it without any situations. I really wanted to go into the zoo, but there was a long line (it was a festive weekend). We did go inside the interpretive center. There was lots of cultural information and exhibits, lots of education for the kids. Next time I'll go earlier and avoid the crowds.

Swing by and take a look at this gorgeous park. Even if you do not bike ride, you can hang out fishing,



Enjoying a beautiful day outside.

**Swing by and  
take a look at this  
gorgeous park!**