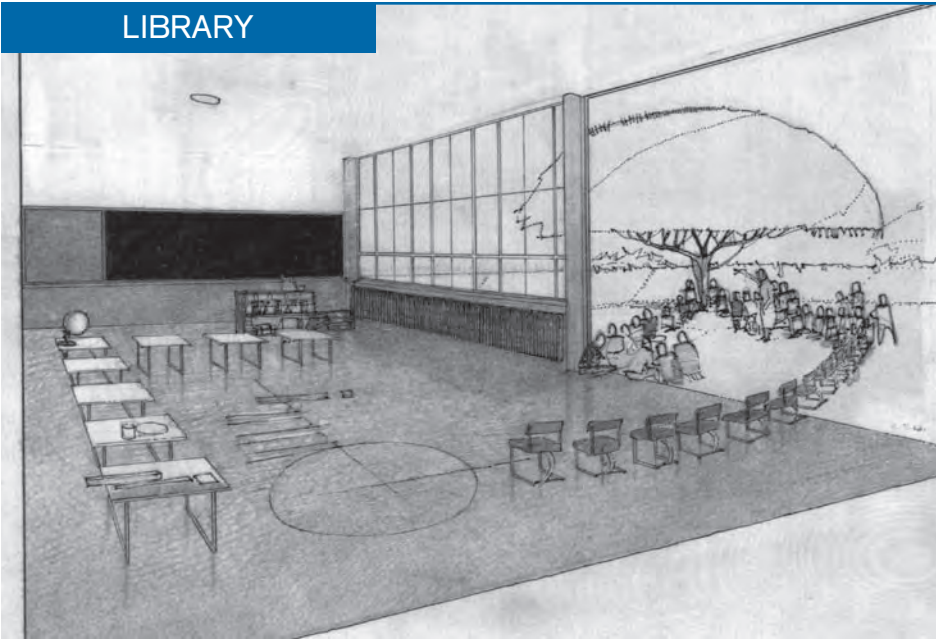
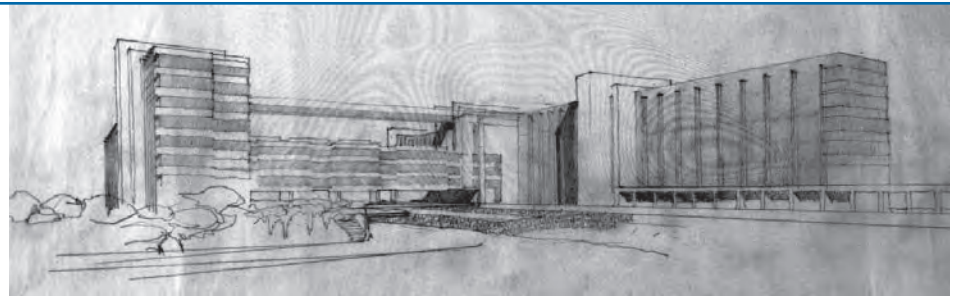


LIBRARY



Corona Avenue School, Los Angeles. 1935. Ink and pencil on linen. Courtesy Department of Special Collections, Charles E. Young Research Library, UCLA.



American Liquid Gas Company. Late 1930s. Pencil on tracing paper. Courtesy Department of Special Collections, Charles E. Young Research Library, UCLA.



Heller House, Beverly Hills. 1950. Pencil and crayon on paper. Courtesy Department of Special Collections, Charles E. Young Research Library, UCLA.



Horse and Serpent. 1915. Pencil, watercolor, and gold paint on board. Courtesy Department of Special Collections, Charles E. Young Research Library, UCLA.

Works by Neutra, on Exhibit

Library exhibits works by noted modernist architect Richard Neutra.

An outstanding selection of travel sketches, figure drawings and building renderings by one of modernism's most important architects, Richard Neutra, will be on display in the exhibit *Richard Neutra, Architect: Sketches and Drawings* from May 3 to Sept. 6 at Central Library's Getty Gallery, 630 W. Fifth St., downtown Los Angeles.

The exhibit is free and open to the public during regular library hours.

The exhibition features choice selections at the Charles E. Young Research Library's Department of Special Collections, UCLA. The pieces range from early pencil sketches from Neutra's student wandering in 1913 to later pastel renderings of his Los Angeles houses from the 1950s. Selected for their artistic quality, the works illustrate Neutra's skill in traditional notions of composition combined with his innovative techniques of architectural representation.

"Not only was Richard Neutra an imaginative and innovative architect, he was also a remarkable draughtsman, and the Department of Special Collections is pleased to have the chance to share its collection of his sketches with visitors to this exhibition," says Department Director Victoria Steele.

Neutra's work in Southern California – characterized by the post and beam structure, cantilevered roof slabs extending into space and an emphasis on the interpenetration of inner and outer space – developed a regional architecture that gained international prominence.

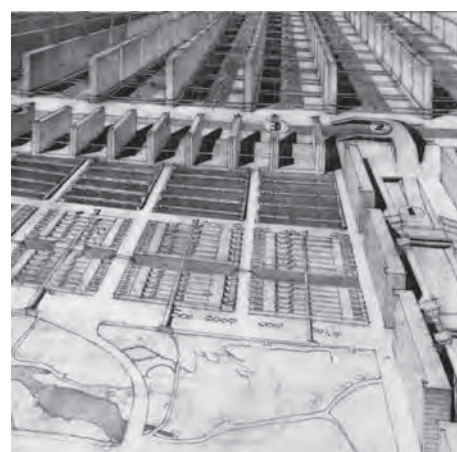
Thomas S. Hines, the exhibition's curator and author of *Richard Neutra and the Search for Modern Architecture*, notes, "While the world's greatest architects have necessarily possessed imagination and skill in planning and conceiving buildings and environments, not all have been great artists and drafters. Richard Neutra was all of those. In the days before computer-aided design, he was supremely gifted in putting pen, pencil and the watercolor brush to paper."

Richard Neutra, Architect: Sketches and Drawings will be accompanied by a free audio

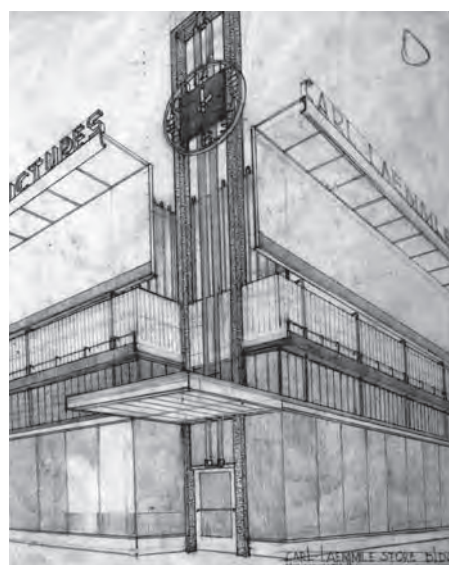
tour featuring a discussion among a group of diverse people on the subject of the artistry and importance of Richard Neutra. Produced by Sandpail Productions, the audio tour includes such voices as Ray Kappe, Kelly Lynch, Sarah Lorenzen, Leo Marmol, Dion Neutra and Victoria Steele. The audio tour will be available in the gallery via cell phone or by download to an mp3 player via the Library's website, www.lapl.org.

Also, ALOUD at Central Library will present a series of talks with renowned architects in conjunction with this exhibition, including a lecture, "Hollywood and Uncle Sam: Richard Neutra in the Great Depression," by exhibition curator Thomas S. Hines at 3 p.m. June 28. For more information, visit www.aloudla.org.

Richard Neutra, Architect: Sketches and Drawings is produced by the Library Foundation of Los Angeles for the Los Angeles Public Library, in cooperation with the Department of Special Collections, Charles E. Young Research Library at UCLA. Exhibits at the Central Library are made possible in part through a grant from The James Irvine Foundation.



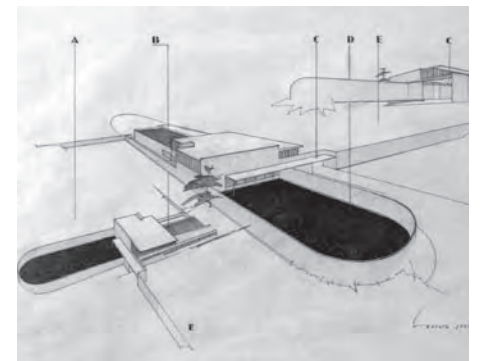
Rush City, Reformed. Late 1920s. Pencil on tracing paper. Courtesy Department of Special Collections, Charles E. Young Research Library, UCLA.



Universal Pictures Building, Los Angeles. 1932-33. Pencil on paper. Courtesy Department of Special Collections, Charles E. Young Research Library, UCLA.



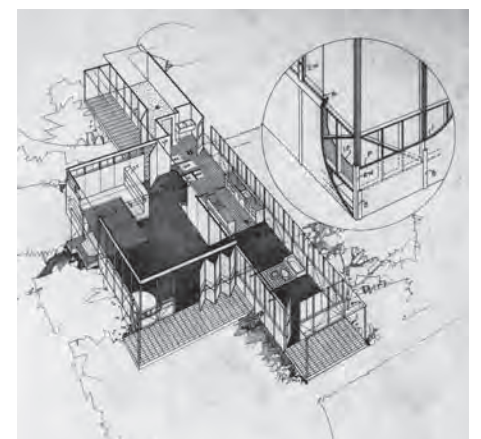
Dione Neutra. 1923. Crayon and pastel on tracing paper. Courtesy Department of Special Collections, Charles E. Young Research Library, UCLA.



Von Sternberg House, Northridge, California. 1935. Pencil and ink on paper. Courtesy Department of Special Collections, Charles E. Young Research Library, UCLA.



9 Palms, California, Christmas. 1938. Crayon on paper. Courtesy Department of Special Collections, Charles E. Young Research Library, UCLA.



Plywood Model House, Los Angeles. 1936. Pencil and ink on paper. Courtesy Department of Special Collections, Charles E. Young Research Library, UCLA.