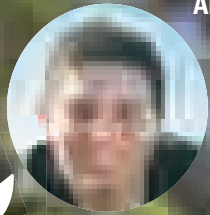


Angel's Be Alive!



Angel Gomez,
Director of
Member Services



Hurry and explore Mount Wilson before it closes for the winter.

Mount



About 10 miles from the 210 Freeway you'll come to the Clear Creek Junction. Go straight (the road actually bears to the right).

Hello again!

This month we head to Mount Wilson, one of the more prominent peaks in the San Gabriel Mountains. Part of the Angeles National Forest, it's where the Mount Wilson Observatory is, at 5,710 feet, although surrounding peaks around the mountain can rise slightly above 6,000 feet. That means there's snow sometimes during the winter at the peak. Also, there are a lot of antennas at the top, relaying radio and television signals.

There is evidence that various Tongva tribes inhabited the mountains and the low-lying valleys around Mount Wilson. But it was named for the first-known explorer of the mountain, Benjamin Davis "Don Benito" Wilson, California statesman and politi-

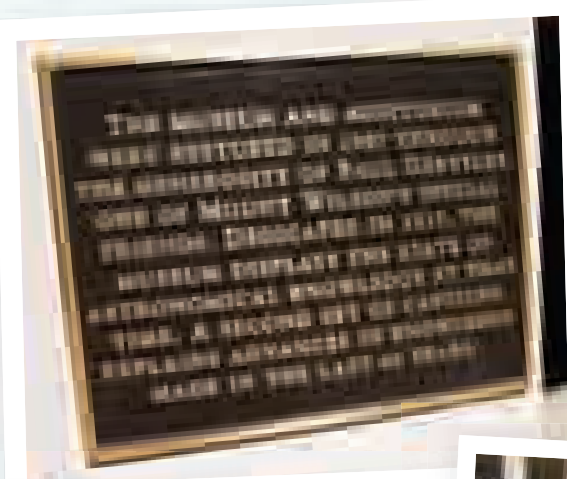
cian. Wilson, grandfather to Gen. George S. Patton Jr. owned Rancho San Pascual at the time and ran a winery at his home near today's San Marino. Wilson hoped to find a suitable wood for his casks and created a hike to the mountain that became a popular pastime for locals, who would make a weekend trip to the summit.

There's still great hiking there today. But remember: The Forest Service requires that vehicles parking within the Angeles National Forest, which includes the parking lot, display a National Forest Adventure Pass or a Golden Age Passport. The Adventure Pass may be purchased for \$5 (one

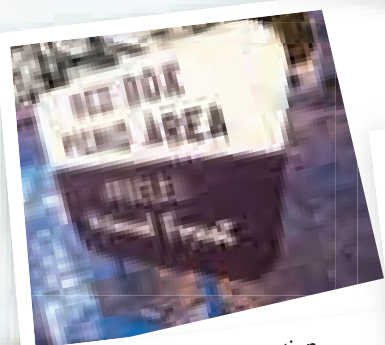
day) or \$30 (one year) at Clear Creek Ranger Station, Red Box Ranger Station and many sporting goods stores. I usually get mine at Sport Chalet in La Cañada at the base of the mountain. You can also buy one at the Shell station just south of the 210 Freeway on Angeles Crest Highway. Keep in



When you see this sign, make a right into the Red Box Ranger Station. You're getting close; only five more miles!



The Astronomical Museum.



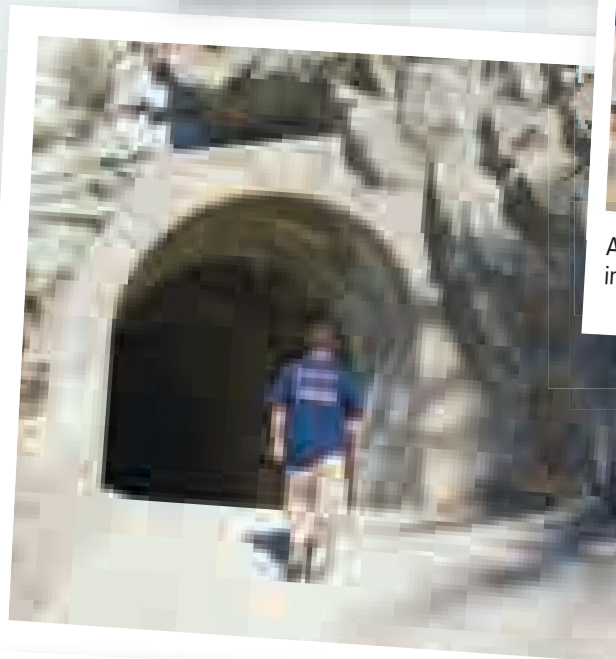
The Red Box Ranger Station.



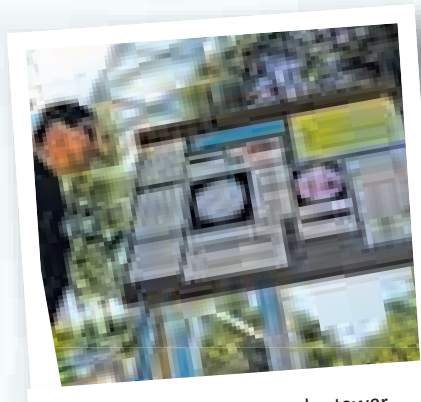
After leaving the Red Box Ranger Station, keep an eye out for mile marker 2.43. There's a turnout a hundred feet or so beyond it, where you can park and take a neat little hike.



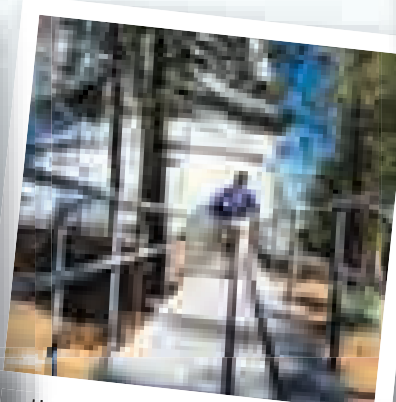
Among other cool items is this "polishing tool" for the telescope mirrors.



Just a couple hundred yards from the road is a very cool tunnel, the Mueller Tunnel. You can walk through it.



Here I am at the 150-foot solar tower. Make sure you read all about it; it's quite fascinating!



Here I am on the ramp leading to the 100-inch telescope.



A beautiful piece of machinery!

Wilson

mind that the ranger stations are not open all the time, but the Shell station is.

Here are some Websites with more information:

- **General information:**
www.mtwilson.edu
- **Here's a self-guided tour:**
www.mtwilson.edu/vis/selfguide.pdf
- **Current weather conditions:**
www.weather.noaa.gov/weather/current/KMWS.html



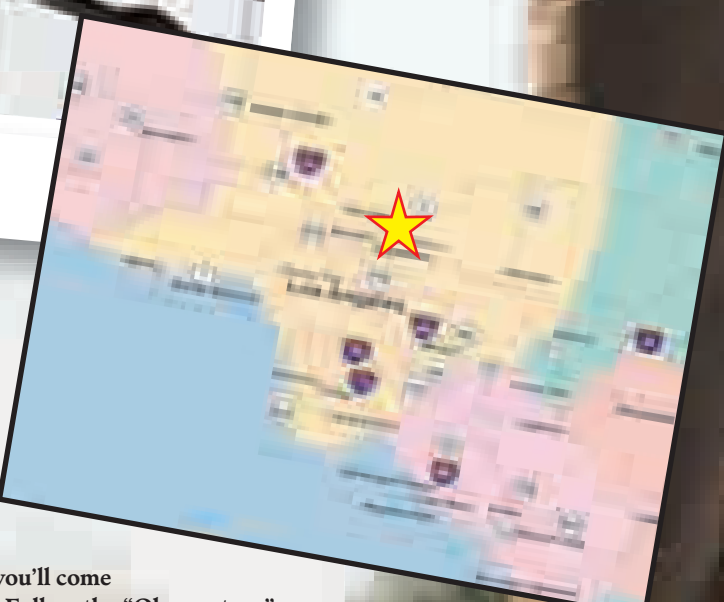
This sign pretty much sums up the climb to the viewing area.



A pretty impressive sight!

Directions:

- From the 210 Freeway, follow the Angeles Crest Highway (State Highway 2) north out of La Cañada Flintridge. After about 10 miles, you'll come to the Palmdale turnoff, the location of the Clear Creek Ranger station. Bear to the right and continue on the highway. After about four miles, make a right turn at the Red Box Ranger Station. In about five miles you'll come to an intersection near some transmitter towers. Follow the "Observatory" sign on the one-way road to the far right around the towers until you reach the Forest Service gate, which is the entrance to Skyline Park and the Observatory.



November Events

Holiday Light Festival and Reindeer Romp

These two annual events – the DWP's Holiday Light Festival, and the Zoo's Reindeer Romp -- combine to make Griffith Park a winter wonderland. Start at the Zoo for the attraction featuring reindeer and includes fun, games and time with the mighty creatures; and then continue your evening by driving (or walking or biking) your way through the beautiful maze of energy-efficient LED lights and sounds. All the details are in this month's Holiday Happenings section.

City sponsors: DWP, Zoo
 • Information: www.dwplightfestival.com; www.lazoo.org

Travel Town Trip to the North Pole

Do you want to take your kids to see Santa, but you want to avoid the mall, or try something new? Griffith Parks's Travel Town turns into a gateway to the North Pole, as this attraction offers glittering miniature train trips to see Santa. Visitors board Travel Town's mini-trains and travel through a wonderland of music and lighted scenes, ending at the "North Pole" and a visit with Santa. Admission fee; photo with Santa extra. See this month's Holiday Happenings for all the details.

City sponsor: Rec and Parks
 • Information: (323) 662-9678

Downtown on Ice

Pershing Square turns into the Rockefeller Center of the West, as the L.A. Kings Downtown on Ice returns for its 11th year downtown. But it's more than just ice skating amidst the downtown skyscrapers in the great Southern California weather – it's concerts, movies and other attractions, too. See the calendar in this month's Holiday Happenings section.

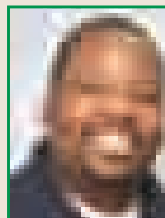
City sponsor: Rec and Parks
 • Information: (888) LA-PARKS (527-2757) or visit www.laparks.org and click on Pershing Square.

Warner Grand Theatre

This large, beautiful art deco theatre in San Pedro is run by Cultural Affairs and offers a full slate of movies and stage plays for your enjoyment. Coming up in November and December: *Las Bellas Novias de Mexico (The Beautiful Brides of Mexico)*, dance, Nov. 1; *The Rocky Horror Picture Show*, film, Nov. 1; Historic walking tours, event, Nov. 8; Opera at the Grand, opera, Nov. 8; *Clarita's Vogue Nutcracker*, ballet/contemporary popular dance, Nov. 12; *Wild Parrots of Telegraph Hill*, short films, Nov. 15; *The Maltese Falcon*, film, Nov. 22; *The Wizard of Oz*, film, Nov. 23; *The Christmas Carol*, theatre, Dec. 4-7; and *The Nutcracker*, ballet, Dec. 13-14.

City sponsor: Cultural Affairs
 • Information: www.warnergrand.org

Ticket Guy Recommends



"I recommend the Aquarium of the Pacific. Go down and enjoy incredible sea life. They even have a shark tank!"

