

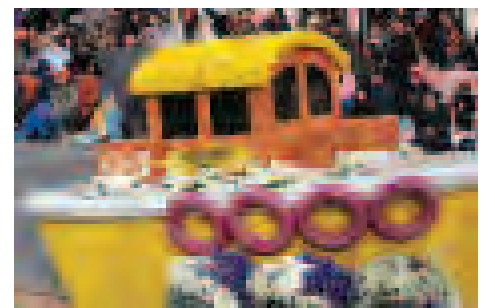


The many Harbor floats, that make up the City's official entry into the Rose Parade Jan. 1, make their way down Colorado Boulevard in Pasadena.



Councilwoman and Club Member Janice Hahn and LAFD Chief Douglas Barry ride aboard the LAFD Boat 2 float.

The Harbor, on Parade



The Wilmington Tug float.



■ Harbor produces an eye-catching collection of floats for the Rose Parade.

Story and photos courtesy Port of L.A.

HARBOR — The Port of Los Angeles made its first entry into the Rose Parade Jan. 1 with a unique combination of six separate vessel floats celebrating the Port's diverse operations with the themes "the place where the world comes together." The Port's float is the official City of Los Angeles entry into the Rose Parade, marking the City's 110th consecutive entry and earning it the title "longest-running float entrant in the parade."

The Port's float was created by veteran Rose Float designers Phoenix Decorating Company and was decorated by Port and City employees, and other volunteer groups, over the past month.

The vessels creating the Port's entry included:

- *The S.S. Los Angeles* container ship was complete with electrical plug to highlight the Port's commitment to clean operations and as the only place in the world where container ships "plug in" to electrical power while at dock. The container ship float will be carrying Los Angeles Mayor Antonio Villaraigosa, Harbor Commission President S. David Freeman and Port Executive Director Geraldine Knatz.
- *The Love Boat* cruise ship celebrated the Port of Los Angeles Cruise Center as the home to the 1977-86 television series and the West Coast's largest cruise port today, with more than one million passengers passing through each year. This ship also sports an electrical plug as the Port of Los Angeles also prepares to "plug in" cruise ships in 2008.
- *LAFD Boat 2* fire boat depicted the Port-based mega-fireboat, Warner Lawrence, the world's largest, most powerful and technologically advanced fireboat in service at the Port of Los Angeles. The \$9 million boat purchased in 2003 by the Port of Los Angeles can stream water more than 200 feet into the air and could fill up an average-sized swimming pool in 10 seconds. This float will also stream some water as it carries Los Angeles Councilwoman Janice Hahn and Los Angeles City Fire Chief Douglas Barry.

- *Catch of the Day* fishing boat was a salute to the major commercial fishing and cannery operations that employed tens of thousands of people at the Port during the first half of the 20th century. The local fishing fleet still operates today and brings in millions of pounds of squid, shrimp, shark, swordfish, lobster, rock cod, halibut, sardines and slime eel on an annual basis. This float carried two Port employees who were selected through a drawing: Stacey Allen, a 28-year employee who works in the Engineering Division, and Vanessa Guillen, a three-year employee who works in the Marketing Division.

- *L.A. Port Police SAFE* (Secure Around Flotation Equipped) boat represented the Port's own dedicated police force of more than 120 officers. The Port Police SAFE boat is used to escort cargo and passenger vessels in and out of the Port, patrol 3,300 acres of water and transport the Dive Team during everyday Port Police operations.

- "*Wilmington Tug*" tugboat was named after the original tugboat operator that served the Port of Los Angeles 100 years ago and paid homage to the vital work these small harbor craft perform every day.



Mayor Antonio Villaraigosa and Harbor Executive Director Geraldine Knatz ride aboard the S.S. Los Angeles Container Ship float.



The many Harbor floats, that make up the City's official entry into the Rose Parade Jan. 1, make their way past their viewing stands along Colorado Boulevard in Pasadena.