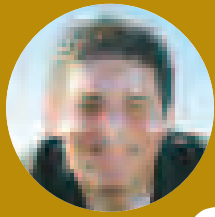
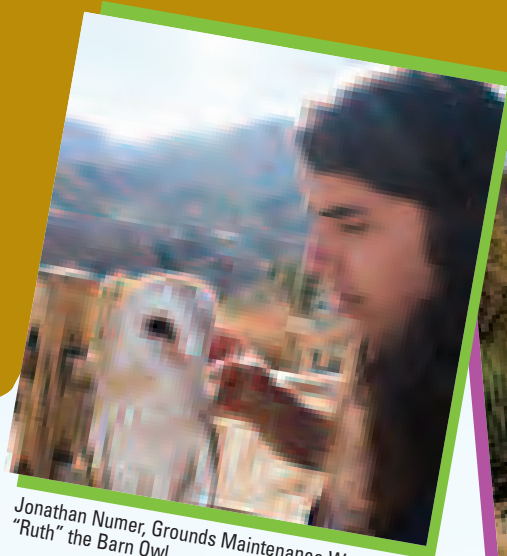


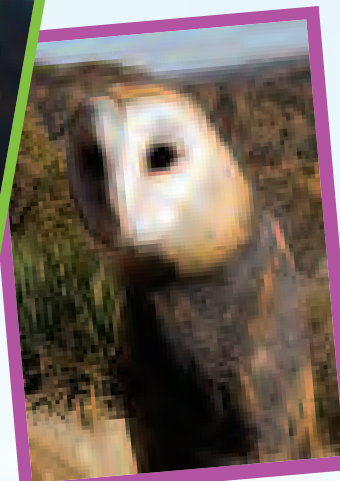
Angel's Be Alive!



Angel Gomez, Member Services Manager



Jonathan Numer, Grounds Maintenance Worker, with "Ruth" the Barn Owl.



"Ruth"



Amanda Dundes, Recreation Service Leader, with "Squints," the Great Horned Owl.

The Devil's Punch

Hello again, my friends!

After a couple of bike adventures, it was time to get back on my feet and hike.

The Devil's Punchbowl is definitely a rare find. It's just east of Palmdale and a must-do for my "Be Alive!" readers.

The car-ride itself is fun (there's nothing like driving through the California desert) and not very far from Los Angeles. You'll also find yourself going through some really neat small towns like Little Rock and Pearblossom, a real blast from the past. In addition, you'll be going right over the San Andreas fault, a great photo op for *Alive Around the World!*

When I got there, I was greeted by very friendly guides and park workers. They gave us the lay of the land and were even kind enough to bring out two owls they rescued and are taking care of. There are several short and easy trails you can take advantage of; the one-third-mile Pinyon Pathway; the one-mile Loop Trail, a more strenuous hike; and the seven-and-a-half-mile roundtrip hike to the Devil's Chair. Remember, there are really nice rangers on site who can answer any questions you have, whether it's about the flora and fauna or more details on the hikes above.

Apparently the Devil's Punchbowl got its name because you can see the outline of the devil (or at least what the devil is supposed to look like) in the side of the bowl.

FACTS FROM ITS WEBSITE: "The Devil's Punchbowl County Park consists of 1,310 acres and was opened to the public in 1963. The 40 acres where the nature center is located were once in private ownership and were purchased by the County of Los Angeles because of [the site's] unique features. The surrounding U.S. Forest Service lands were then added to enhance the park. The Los Angeles County Department of Parks and Recreation now operates this area as one of its Natural Areas facilities.

"The most conspicuous features of the park are geological. The Punchbowl is a deep canyon cut by the runoff of large quantities of water from the higher San Gabriel Mountains occurring over a long period of time. These mountain peaks above the park are 8,000 feet in elevation, while the Nature Center is 4,740 feet above sea level. The Punchbowl Canyon is 300 feet deep at the vista point. The peculiar up-tilted rock formations to be seen in the entire area are layers of sedimentary rocks that were formed long ago by the depositing of loose material in horizontal layers by water. Later they were squeezed into their present steeply tilted form by the continuing action of uplift along the Punchbowl and Pinyon Faults and pressures along the San Andreas Fault. The Punchbowl Fault is to the south of the rock formation, while the Pinyon and San Andreas Faults are to the north. A detailed description of the process theories is available in handout form from the Nature Center."

PUNCHBOWL FACTS:

- **Elevation:** 4,750 feet above sea level
- **GPS coordinates:** N 34 degrees 24.835'; W 117 degrees 51.516'
- **Website:** www.devils-punchbowl.com
- **Parking, hiking and programs:** Free; donations accepted
- **Park Hours:** Sunrise to sunset
- **Visitor Center hours:** Monday through Saturday; 8 a.m. to 4 p.m.; Sunday: 10 a.m. to 4 p.m.
- **Information:** (661) 944-2743. (Call before you go to make sure the trails are open – because of the fire danger lately they have had to temporarily close the trails.)

Be Safe and Be Alive!



The Punchbowl.



I was fortunate enough to meet the people (who were super-nice, by the way!) who run the park and some of its surrounding area. From left: Pauline Numer, L.A. County Wildflower Sanctuaries, 15 years; David Numer, Regional Park Supervisor, 35 years with the LA County; Jonathan Numer, Grounds Maintenance Worker, L.A. County Wildlife Sanctuaries, 7 years; Amanda Dundes, Recreation Service Leader, 1 Year; Charity Edwards, Recreation Service Leader, 9 years; and me.

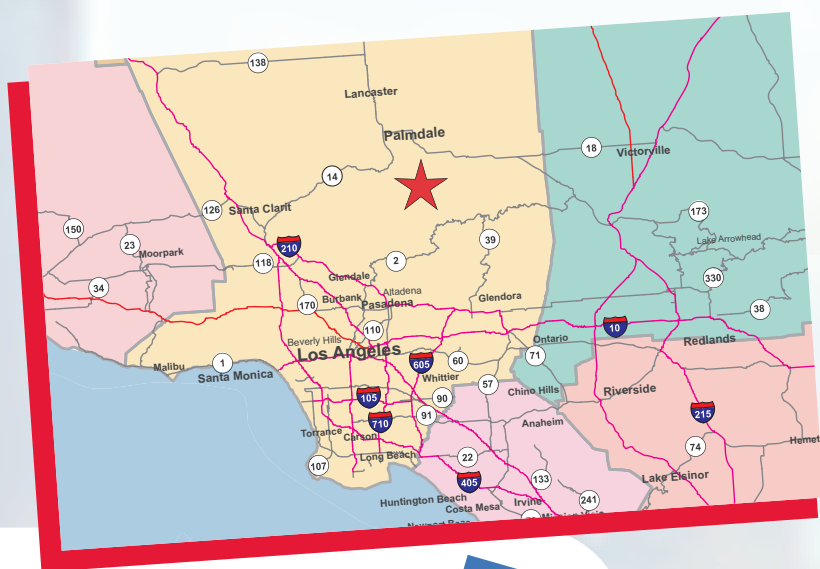


Squints

How many of these Be Alive! adventures have you taken?

- Echo Park Lake (April 2007)
- Echo Mountain Trail to the Ruins of the White City (May 2007)
- Runyon Canyon (June 2007)
- Coldwater Canyon Park (July 2007)
- Millard Canyon Falls (Aug. 2007)
- Will Rogers State Historic Park (Sept. 2007)
- South Bay Beach Bike Trail (Oct. 2007)
- Los Angeles River Bikeway (Nov. 2007)
- The Devil's Punchbowl (Dec. 2007)

bowl



Directions:

Devil's Punchbowl
28000 Devil's Punchbowl Road,
Pearblossom, CA 93553

- Take the 110 (Harbor Freeway) north to the 5 (Golden State Freeway) north.
- Stay on the 5 north for about 8.5 miles.
- At the 14 Freeway, go north toward Lancaster and Palmdale. You'll be on the 14 Freeway for about 30 miles.
- At Pearblossom, exit the Freeway (exit 30). Stay on Pearblossom Highway (headed toward Victorville), going east.
- After traveling on Pearblossom Highway for about 10 miles, you'll see the sign for the Devil's Punchbowl. Turn right. If you're feeling brave, you can check out the fenced-in goats at the corner; there are quite a few, and when I stopped to take this picture, they all came running over to me. It was pretty exciting!
- You'll go 2.2 miles on Longview, then you'll jog to the left for .35 miles on Fort Tejon Road. And then, make a right to pick up Longview again.
- When you see this sign you're really close. Just make a left (Tumbleweed Road) and follow the signs to the park (unless you're like me and want to get your picture next to the Devil's Punchbowl sign).

Distance from Downtown:
78 miles (1 hour and 35 minutes of driving time)



December Events

12th DWP Holiday Light Festival

The DWP's annual Holiday Light Festival "goes green" this year, with energy-saving LED lights and other features.

- Open to regular vehicles Nov. 26 through Dec. 28
- 5 - 10 p.m. nightly
- In Griffith Park, along Crystal Springs Drive
- Information: (323) 913-4688 ext 9 or www.dwplightfestival.com

Downtown on Ice

Downtown's holiday event returns to Pershing Square through Jan. 21.

- Hours: Mon. - Thurs.: Noon to 9 p.m.; Fri. - Sun.: 10 a.m. to 10 p.m. Extended holiday hours: Dec. 14 - Jan. 6 from 10 a.m. to 10 p.m. daily. Call for special hours Christmas and New Year's Eve and Day.
- Open every day and all holidays.
- Admission: \$6 per session. Skate rental: \$2. Group and party rates available.
- Information: (888) LA-PARKS (527-2757), or www.laparks.org

Banning Residence Museum Victorian Christmas

Take a step back in time at this Rec and Parks facility.

- Exhibition: "Educational Amusements: American Games of the Victorian and Edwardian Era," through Jan. 6
- Victorian Christmas, Dec. 1 and 2
- Candlelight Tours, Dec. 8 and 9
- After-Christmas Sale, Dec. 26
- General museum tours begin at 12:30, 1:30 and 2:30 p.m. Tuesday, Wednesday and Thursday; and 12:30, 1:30, 2:30 and 3:30 p.m. Saturday and Sunday. A \$5 donation is requested. The Museum is closed on national holidays.
- Information: (310) 548-7777.

L.A. County Holiday Celebration

L.A. County presents its 48th annual "Kaleidoscope of Seasonal Traditions," a six-hour, free show of choirs, music ensembles and dance companies reflecting the vibrant spectrum of cultures found in Southern California.

- From 3 to 9 p.m. Christmas Eve, Monday, Dec. 24
- At the Dorothy Chandler Pavilion downtown
- Admission and parking are free
- Information, www.lacountyarts.org

Ticket Guy Recommends:

Medieval Times

Go back in time this holiday season ... at Medieval Times! Get out of the cold, eat with your hands, and enjoy a great show with your family. And get great Club discounts, too.

Purchase your tickets through the Club Store. See contact information on the second last page of this issue.

