



John's Picture Perfect Contest



Winner for September



"While taking a walk, I came across this loving couple on the sidewalk. I guess there is a very thin line between love and hate. Photo taken with a Canon Power Shot A710. @1/160 sec., f 4.0, ISO 100."
- Carlos Ojeda.

John's comments: Now this is a true "picture perfect!" If only we humans could be so accepting. Thanks, Carlos!

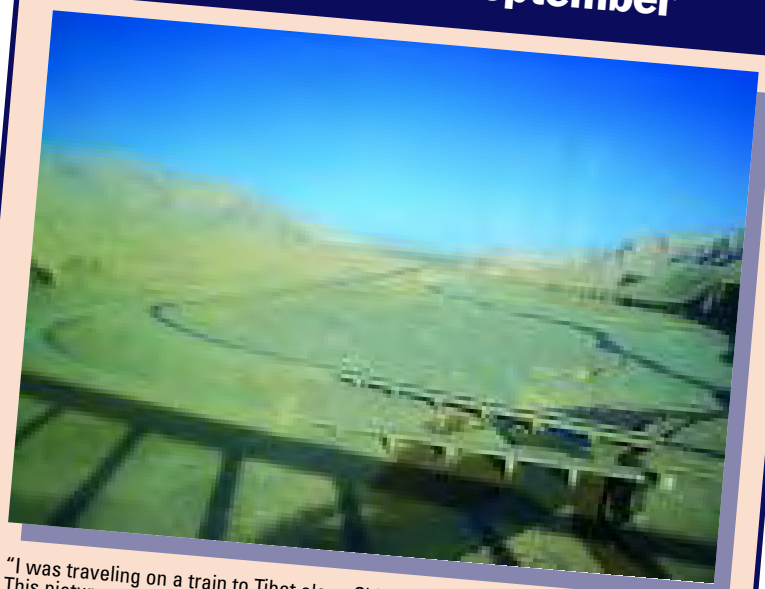
For September, we have four winners!

Start snapping today, and send us your best results! Four winners will receive a \$25 Target Card.

WIN FOUR PRIZES
\$25 Target Card

NEXT DEADLINE: October 15
 Happy Snapping!

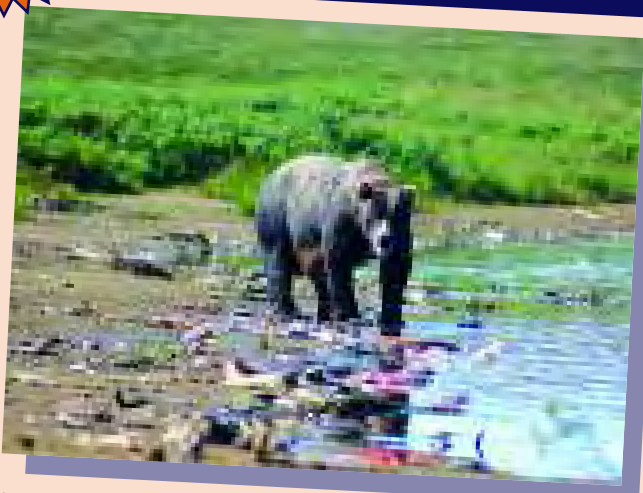
Winner for September



"I was traveling on a train to Tibet along China's newly-built Qinghai-Tibet Railroad. This picture was taken at the Hoh Xil Wilderness, one of the world's largest uninhabited lands with elevations above 16,000 feet, through a window on the train. A two-lane highway, which also goes from Qinghai to Tibet, can be clearly seen in the vast wilderness. On the bottom of the picture, there is a shadow of my train on a high bridge."
- Peter Wei, DWP.

John's comments: Now, this is what I call "no man's land," 16,000 feet above sea level on the way to Tibet. Completely amazing. Thanks, Peter, for sharing a rare glimpse of the earth that most of us will never see.

Winner for September



"My husband and I went on a bear-viewing excursion in Alaska. This is just one of the grizzlies we were able to 'capture.' Beneath him are the salmon remains that have been left behind by the bears, whose stomachs are too full to eat the whole thing. It was an amazing experience."
- Antoinette Barrios, Bureau of Engineering, Architectural Division, Public Works.

John's comments: Just looking at this picture gives me goose bumps! Thanks as always, Antoinette, for your wildlife shots!

Winner for September



"I took this picture while waiting in line for the elevator to take me to the top of the Eiffel Tower (in Paris). I don't know where I got the idea to take a picture like this, but I am sure the red wine I had played a part in it. The thing I find humorous is that other people in line witnessed me doing this, and soon it seemed like everyone was taking this same picture. Hope you like it!"
- Everett Bennett, Assistant Construction Inspector, Bureau of Contract Administration, Public Works.

John's comments: Red wine or not, this is one of the most unusually beautiful pictures I've seen in a long time. Who would have thought that the rivets on the Eiffel Tower could be so intriguing? Thanks, Everett!

Runners Up:

Irene Valido,
 Rec and Parks
Neda Daneshmand

Jacob Haik
 George Cormany
Annie Ramos

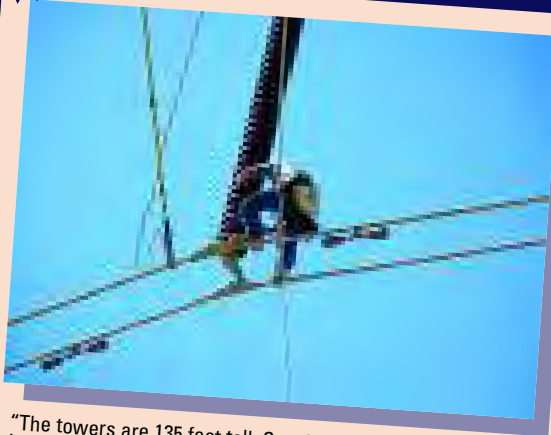
Anna Lucas
 Margo Kennedy
Leticia Lopez

Mike O'Connell,
 LAPD

RULES:

- The contest is open to all Club members in good standing. Non-members are welcome to submit, but only Club members are eligible to win the monthly prize.
- If your photograph does not win, you are welcome to re-submit.
- Winners are chosen by Club staff. All decisions will be final.
- You must certify (if asked) that you indeed took the picture. No ringers!
- Photos can be submitted either on paper or digitally. Please don't send both.
- If you want your print photo returned, please write your name, address and phone number on the back of your photo.
- Photos can be of any subject matter: vacation, portraits, families, landscapes, still lifes, pets, etc. Subject matter must be appropriate for *Alive!*
- Paper prints can be mailed to: Picture Perfect Contest, *Alive!*, City Employees Club of Los Angeles, 350 S. Figueroa St., Suite 700, Los Angeles, CA 90071
- Digital photos optimally should be between 100K and 2 megabytes in size and may be e-mailed to: pictureperfect@cityemployeesclub.com
- The contest is all in good fun: The Club cannot be responsible for delays in delivering *Alive!*, or for delays in the transmission of responses.

Honorable Mention

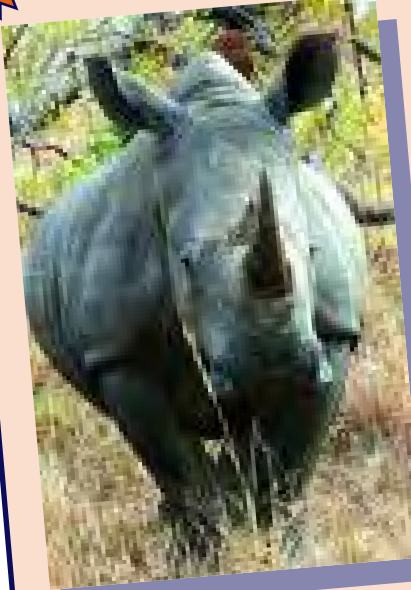


"The towers are 135 feet tall. Cooning the bells means climbing down the insulators to the wire, then you put the cart on. The spans are a quarter-mile long."

- Ron Angst, DWP.

John's comments: This is simply crazy; these guys should get an award for doing this job. I guess that's where the expression "nerves of steel" comes from! Thanks, Ron.

Honorable Mention

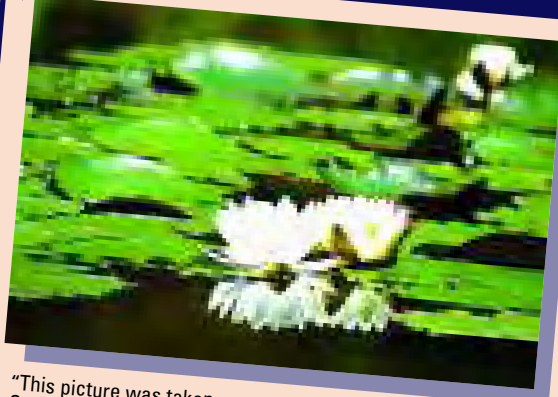


"I shot (photographically) this Southern white rhino in Kruger National Park (South Africa) July 5. In this particular photo, the rhino was about 15 feet from the tour bus. I had the 70-200mm lens with 1.4X tele-extender on my Canon 30D (the 70mm short end is equivalent to 157mm for 35mm format), and the rhino literally filled the frame because it was so close. It is as massive and impressive in real life as in the photo. Unfortunately, they are not invincible to poaching and habitat destruction."

- Cong Nguyen, ITA.

John's comments: A truly majestic beast caught with such great detail. Thank you, Cong!

Honorable Mention



"This picture was taken on a solo getaway to the Los Angeles County Arboretum and Botanic Garden earlier this year."

- Jenny Arzate.

John's comments: Jenny, this might be the most beautiful picture of a lily I've ever seen. You captured the depth of field with precision, and the contrasting colors and the reflection are wonderful. Nice work!



100 N. 1ST ST., Ste. 301, Burbank, CA 91502
(888) 801-5522 CA License #0252636

Club Members! Save on your Auto Insurance!



Get a
**\$50 Arco
Gas Card**
For Club Members
if they purchase
by October 1.

**Come for the great savings.
Stay for the great service.**

United Agencies is your Club recommended Insurance Broker.

When it comes to auto insurance, Mercury Insurance is known for their high level of service and some of the lowest rates in California. It's a winning combination from Mercury Insurance that more than 1,000 drivers a day are switching to.

Take a look at how Mercury Insurance stacks up against the competition!

	COMPANY	(90041 Zip Code)
California Automobile Insurance Premium Survey	Farmers	\$2,375
	GEICO	\$1,927
	Allstate	\$1,910
	State Farm	\$1,248
	21st Century	\$1,113
	Mercury Insurance	\$964

These insurance products are brought to you by the Club's Partner, United Agencies, Inc. CALIC #0252636 United Agencies represents Mercury Insurance Group, as well as: Crabb Insurance, Hartford, Farmers Fund, Progressive, Civil Service Employees Insurance, Allco, Safeco, Travelers, Unigard and Encompass.

(888) 801-5522
DIRECT LINE FOR CLUB MEMBERS



Home and Auto Insurance
Services provided
for members of the
CITY EMPLOYEE'S CLUB

**We also have great rates on Homes, Boats,
Motorcycles, RV's, Rental Properties
and Apartment Buildings.**

A FREE Benefit to members of the City Employees Club of Los Angeles