

Lanark Pool: Water's Fine!

■ **Lanark Pool reopens after \$3.2 million renovation.**

Story and photos courtesy Rec and Parks



REC AND PARKS — Residents can once again go swimming and enjoy other aquatic activities at the Lanark Recreation Center Pool, operated by Rec and Parks. The \$3.2 million project included a completely new pool and a renovated bathhouse. The pool is 60 feet by 120 feet, with a depth ranging from three-and-a-half feet to 12 feet and can accommodate up to 360 people; it holds 47,000 cubic feet of

water, which is more than 350,000 gallons. The new pool is the same size as the existing one, has racing lanes, underwater lights, a diving stand, and a lift for the disabled. The bathhouse was upgraded to comply with Americans with Disability Act requirements. New pool pumping and pipe equipment has been installed, and other improvements have been made, including to the pool deck and parking areas.

Sparano and Mooney Architecture of Los Angeles designed the project, with Western Group, Inc. of Woodland Hills serving as the general contractor. The Architectural Division of the Bureau of Engineering, Public Works, managed the project through its Municipal Facilities Program. Funding came from a several sources, including developer fees, the Los Angeles Community Redevelopment Agency, Propositions 12 and 40, and both the City's and Rec and Parks' general fund. The pool was finished early and under budget, while the bathhouse was completed on time and on budget.



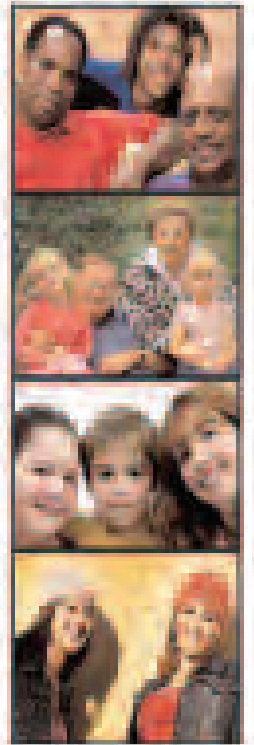
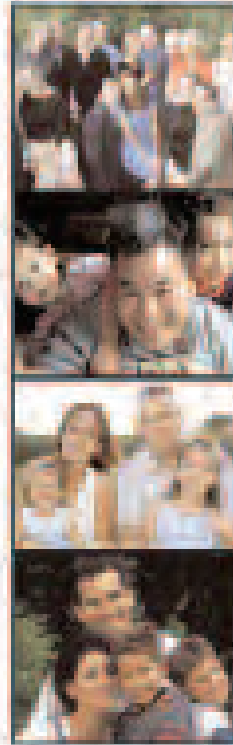
Mayor Antonio Villaraigosa gets ready to give some young divers the okay to reopen the Lanark Pool.

All of Your Family & Friends Can Now Join LAFCU

Ask Us How!

Everyone you know can now enjoy:

- Low Loan Rates
- Easy Account Access
- Financial Security
- Many Beneficial Products & Services



LA LOS ANGELES Los Angeles Federal Credit Union • P.O. Box 50002 • Los Angeles, CA 90051-0002
 Tel: (213) 697-1111 FAX: (213) 697-2288
 eMail: member-services@lafcu.org • Website: www.lafcu.org



*APR 6.99 Annual Percentage Rate
 You must be a member of LAFCU to obtain credit. LAFCU membership is open to active and retired employees, active volunteers of Los Angeles City (including DWP), LAFCU and LAFCU approved Select Employee Groups, members of the Los Angeles Chamber Association, Inc., and members of their professional bodies.

The Entertainment Capital of L.A.

GET 'BACK'... BEFORE IT'S HISTORY!

Last Chance to Ride Before it Closes Forever!
9/3/07

BACK TO THE FUTURE THE RIDE

GENERAL ADMISSION
\$47
PER PERSON

BUY A DAY, GET A YEAR FREE
\$61
PER PERSON

FRONT OF LINE PASS
\$109
PER PERSON

For tickets or more information contact (800) 777-7766

©2007 Universal Studios, Inc. All Rights Reserved. Universal Studios is a trademark of Universal Studios, Inc. Back to the Future is a trademark of Universal Studios, Inc. All other trademarks are the property of their respective owners. All Rights Reserved. 8/13/07