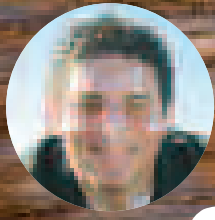


Explore... Enjoy... Relax... Share... Hike... Join... Fun... Excitement... Active... Involved...

Angel's Be Alive!



Angel Gomez,
Member Services
Manager



At the trailhead, Angel is ready to begin his latest adventure.

Don't miss the beautiful
flower growing as you
enter to the left (near the
children's playing area).



Hiking Hollywood:

RUNYON

The last time we talked, I recommended a trail above Griffith Park. The view was magnificent! I hope you made some time to visit the path, because, unfortunately, Griffith Park had a major fire May 8 – see this month's cover story. That path near Dante's View is no longer open. That's kind of scary; I was just up there a few weeks before the fire. Wow!

This month, I'm taking you to Runyon Canyon Park. Have you heard of it? It's a wildlife preserve only a few blocks from the famous Mann's Chinese Theatre.

The park was purchased by the Santa Monica Mountains Conservancy and the City of Los Angeles in 1984. If you like stunning views of Los Angeles and like walking your dog, then this is the place for you.

Did you know that the Hollywood sign had a neighbor? To the left of the sign was another sign, "OUTPOST", a giant red neon sign and in its day, it was more noticeable than the "Hollywoodland"

sign. When you hike up to the top and come down and around the Runyon Canyon Trail you can actually see the remains of it on your left. It looks like old rusty steel (80-year-old remains) and is still lays there today. I took a moment and touched the sign.

But I've gotten ahead of myself.

The trail starts under "The Pines" gate and is made of cement, before becoming a dirt path. Keep to the right and continue up the path. If you continue on Hollywood Boulevard and turn right on Vista Street, there are two other paths, but I did not follow them.

The trail is about two miles long and loops around Runyon Canyon. Did you know that the loop passes by the ruins of a pool house designed by Frank Lloyd Wright? Errol Flynn also lived here for several years. You can see old foundations and a tennis court while on the trail. The actual path is very roomy; you likely will see friendly people walking man's best friend. There is a leash requirement.

I noticed three different observation points. The first one is a half-mile up the path. The second one is on the ridgeline (at the very top, there is a big bench, so take your time and enjoy the view). There's one more on your way down the hill.

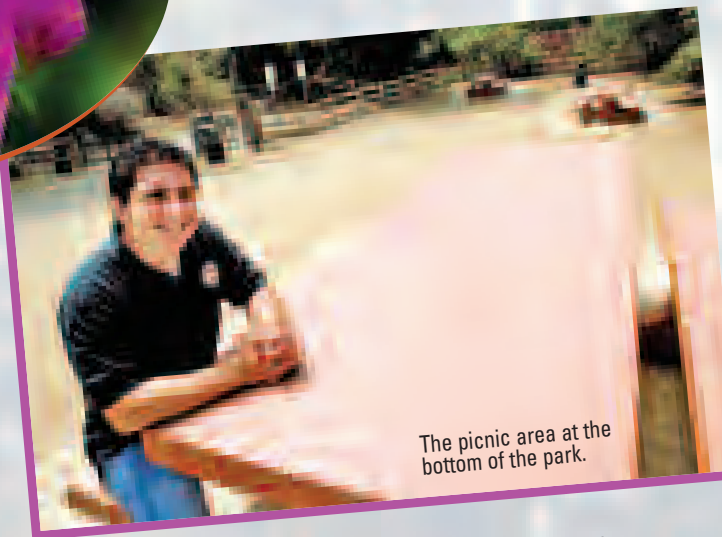
I really enjoyed this hike. If you bring a small lunch, there are also picnic tables available. Next time, I will take my own advice and bring one. Lastly, the degree of difficulty was moderate, and total hiking time (depending on your speed) took about two hours to finish.

As I was going under "The Pines" gate, there was a big bowl with water, sport drinks and bananas (For a small fee). There is no attendant, and as I was watching they all just put the money in an old mailbox attached to the bowl. That was pretty cool and the banana was very good too.

I'll see you next time.



Snacks and water at the entrance.



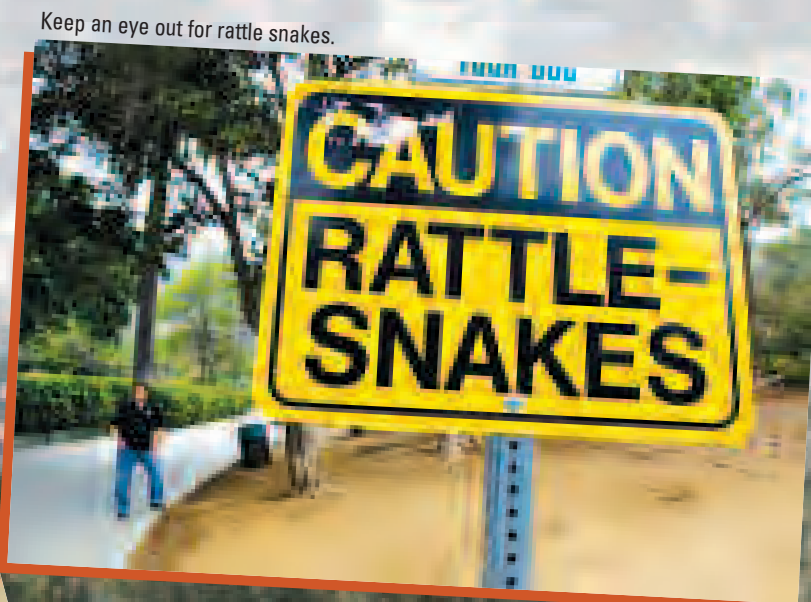
The picnic area at the bottom of the park.



Old ruins in the park.



The remnants of the old "Outpost" sign.



Keep an eye out for rattle snakes.

Explore... Enjoy... Relax... Share... Hike... Join... Fun... Excitement... Active... Involved...

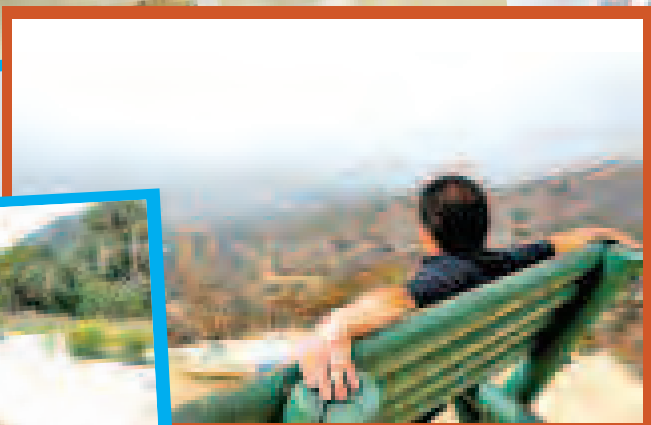
CANYON



Bring some plastic "doggie bags" or take some just in case you forgot them (remember, it's a criminal offense to not pick up after your dog).



On the giant bench.



Taking a rest on the giant bench at the top.



Remnants of old tennis courts.

How do you get to Runyon Canyon

On Hollywood Boulevard, go west past Mann's Chinese Theater in the heart of Hollywood. Continue going west and then look for Fuller Avenue. When you find Fuller, make a right turn and start looking for parking (be sure to check the posted signs as you go up). Plan ahead and get there early as parking is a bit tight, but hikers go up and come down frequently.

FAST FACTS

GPS coordinates at trailhead:
N 34° 06.314 / W 118° 20.936

Elevation at trailhead:
553 feet above sea level

Elevation at highest point:
1,062 feet above sea level

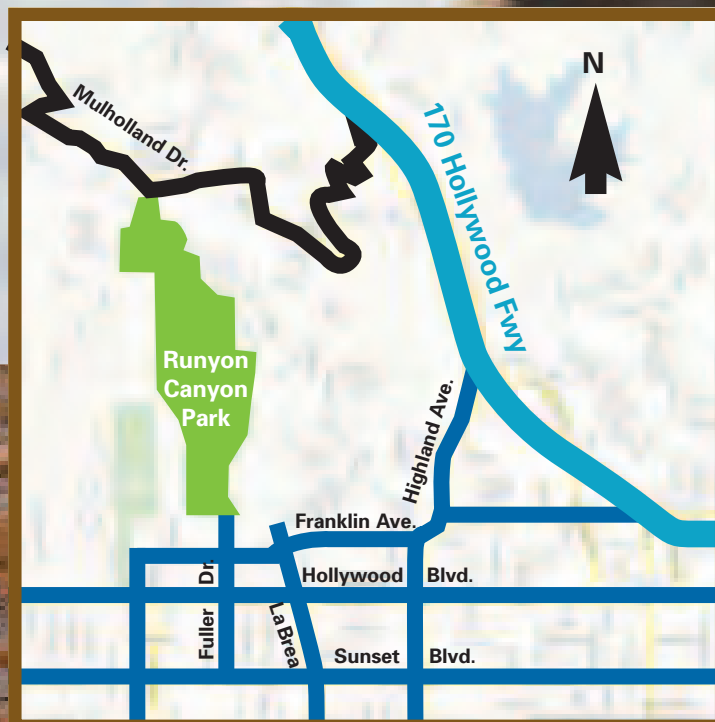
Total elevation gain: 509 feet

Total distance of trail: 2.49 miles

Total time it took me to hike
(with much meandering): 2 hours

Total time it will take a normal person: 1 hour

Distance to highest elevation, the peak: 1.6 miles



June Events

Pershing Square Summer Concert Series

The park in downtown begins its annual series of lunchtime concerts, "Swingin' Summer Nights" and Salsa Sundays. *Information:* www.laparks.org/pershingsquare/pershing.htm

Grunion Run

Head to the Cabrillo Marine Aquarium in San Pedro for the viewing of grunions as they land on the beach. Dates in June: Sat., June 2 (10:20 p.m. to 12:20 a.m.) and Saturday, June 16 (10:35 p.m. to 12:35 a.m.). *Information:* www.cabrilloaq.org

Shakespeare by the Sea

Another season of Shakespeare by the Sea arrives at Point Fermin Park in San Pedro. Two great comedies, *The Taming of the Shrew* and *The Merchant of Venice*, will be performed Thursdays through Sundays starting June 14. Free admission. *Information:* www.shakespearebythesea.org

American Heroes Air Show

This air show at Hansen Dam features static displays and flight demos of helicopters from law enforcement, fire service, military, corporations and the media. Free. *Information:* www.heroes-airshow.com/socal.html

Fourth of July Events:

At the Rose Bowl:

www.rosebowlstadium.com

Pomona Fairplex:

www.fairplex.com

The Queen Mary:

www.queenmary.com

Hollywood Bowl:

www.hollywoodbowl.com

Marina del Rey:

<http://beaches.co.la.ca.us/BandH/Events/July.htm#fireworks>

Ticket Guy Recommends:

The Queen Mary is

one of Southern California's most unique places for fun. Have you been there? How long has it been? Remember, the Club has discount tickets for this cool attraction.



■ Come aboard the legendary Queen Mary. Book the Behind the Scenes Guided Tour of the historic ocean liner and World War II troopship, and see restored areas that have been under wraps since the final voyage in 1967, including the Isolation Wards and the aft Machine Rooms.

■ Journey through the first-class swimming pool, a popular spot for ghost sightings and part of the Ghosts and Legends show, a daily, special effects, walk-through show created aboard the ship that dramatizes actual paranormal and historic events that have been reported over the years.