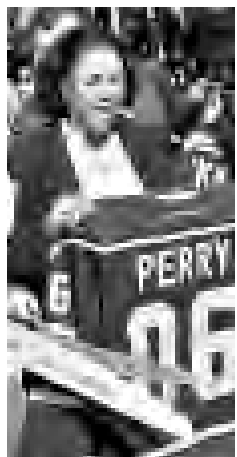
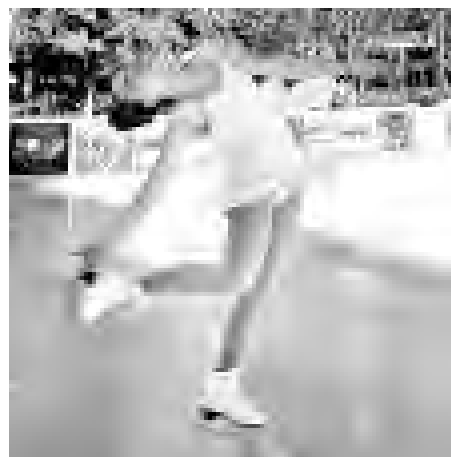


# Holiday Happenings



Enjoying Downtown on Ice's first day, among others, were Councilwoman Jan Perry (left) and Rec and Parks General Manager Jon Kirk Mukri (above), both Club Members.



## Downtown on Ice

**What:** Skating, concerts and movies at a temporary ice rink in Pershing Square.

**When:**

- Through Dec. 14, Jan. 8 – 15:  
Noon to 10 p.m. Monday through Thursday  
10 a.m. to 10 p.m. Friday through Sunday
- Dec. 15- Jan. 7:  
10 a.m. to 10 p.m. daily.

**Where:** Pershing Square, 532 South Olive St., Downtown L.A.

**Cost:** \$6 per skating session; \$2 for skate rental

**Cost Specials:**

- A partnership with Metro allows riders to receive a \$1 skating session discount by showing a coupon available on Metro lines. The convenient stop at Pershing Square Station makes getting there easy.
- Parking in the underground Pershing Square lot can be discounted with ice skating validation.



## Put It on Ice

■ Skating is just part of the fun when Pershing Square adds an ice rink.

**REC AND PARKS** — Holiday revelers who choose to attend the annual Downtown on Ice have more to do than just ice skate, although that's plenty.

There are also live music and movies!

The ninth season runs through Jan. 15 at Pershing Square, 532 South Olive St.

Downtown on Ice is made possible by sponsorship from Rec and Parks, the LA Kings and Councilwoman and Club Member Jan Perry.

**The schedule for skating:**

- Through January 15
- Mon. -Thurs.: Noon – 10 p.m.
- Fri. – Sun.: 10 a.m. – 10 p.m.

**Concerts:**

- Tues./Thurs.: Noon – 2 p.m.
- Sun: 2 – 4 p.m.
- Fri: 8 – 10 p.m.

**"Glide-In Movies:"**

- Wednesdays. 7 – 9 p.m.
- Dec 13: *Beauty and the Beast: Enchanted Christmas*

■ Dec. 20: *It's a Wonderful Life*

■ Dec. 27: *E.T.*

■ Jan. 3: *Nanny McPhee*

■ Jan 10: *Dr. Seuss's The Cat in the Hat*

Site: 532 South Olive St., Downtown L.A.

Cost: \$6/hour, \$2/skate rental

More info: (213) 847-4970 or [www.laparks.org/pershingsquare/doi.htm](http://www.laparks.org/pershingsquare/doi.htm)

Sponsor: Rec and Parks

As the Rockefeller Center of the West, the vast outdoor ice oasis lies nestled downtown in the heart of the City among the towering skyscrapers and historical landmarks, easily accessible by car or Metro stop.

Downtown on Ice draws an estimated 500,000 spectators and 200,000 skating enthusiasts each year.

Downtown on Ice is open seven days a week (including holidays). Admission is \$6 per skating session, plus skate rental. Call (213) 847-4970 or toll free (888) LA-PARKS (527-2757) for more information.



# Light Up the Holidays!



■ DWP Light Festival, an LA holiday tradition, joins with the Zoo's Reindeer Romp for a great family event.

DWP — You think you have a big job hanging your Christmas lights around your house and office? Well, try hanging a half-million of them!

It's a job best left to the professionals ... but enjoyed by all.

It just wouldn't be the holidays without the DWP's Light Festival. Participants can view more than a half-million lights in festive displays showcasing the uniqueness of the City.

The Light Festival in Griffith Park is open every night from 5 to 10 p.m. through Dec. 30. This one-mile celebration of twinkling lights and music has become an L.A. tradition. Visitors can

drive through in their own cars, walk the route or take advantage of the warm and comfortable shuttle service. Shuttle service is available from the LA Zoo for the weekends of Dec. 1-3, Dec. 8-10 and each night from Dec. 15 through Dec. 29.

The DWP Holiday Light Festival was started 11 years ago with the vision of then-City Council President John Ferraro. He had a vision of a holiday gift from the City to the residents and visitors of Los Angeles. The thought was to do something unique and the idea of light displays was very appealing. Since lights were the idea, the

DWP was approached to help lead the effort with their expertise in power. The festival was started with the light displays representing important landmarks of the City of Los Angeles.

The festival has grown every year. It now stretches more than a mile along Crystal Springs Drive in Griffith Park. The festival includes displays showcasing famous City landmarks including City Hall, the Vincent Thomas Bridge, the Hollywood Bowl, Venice Beach, Staples Center, the LA Zoo and more. And there are always new additions!

The actual displays are developed with the

direction of the DWP and are constructed and installed by other companies.

The festival is important to the community as it offers a family attraction that can be enjoyed by young and old and is free. Every year the DWP hears stories of the families who make their annual visit to the festival. Families often gather children in the back seat in their pajamas and enjoying popcorn, as they visit the festival and enjoy the lights and the tradition.

Not only does the festival include the many light displays, but there is holiday music to add to the experience.

## DWP Holiday Light Festival

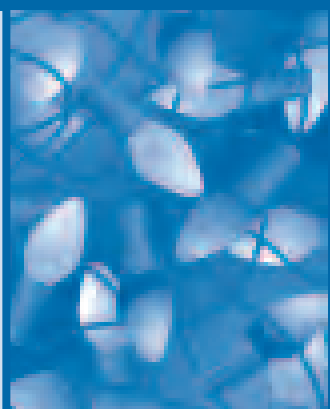
**What:** Mile-long drive through Crystal Springs Drive decorated with more than half-a-million lights.

**Dates:** Through Dec. 30

**When:** 5 to 10 p.m.

**Where:** Crystal Springs Drive, Griffith Park (near the Zoo)

**Cost:** Free



Shuttle service is available the weekends of Dec. 1-3, Dec. 8-10 and each night from Dec. 15 to Dec. 29



# Holiday Happenings



Guests at Travel Town in Griffith Park can take a train to the North Pole during the holidays.

## Travel Town Railroad

**What:** Travel Town Railroad takes families on a magical ride to the North Pole to see Santa.

**Dates:** Weekends through Dec. 10, then, beginning Dec. 13, nightly through Dec. 23.

**When:** 5 to 8 p.m.

**Where:** Travel Town Museum, 5200 Zoo Dr., just off the 134 Freeway at Forest Lawn.

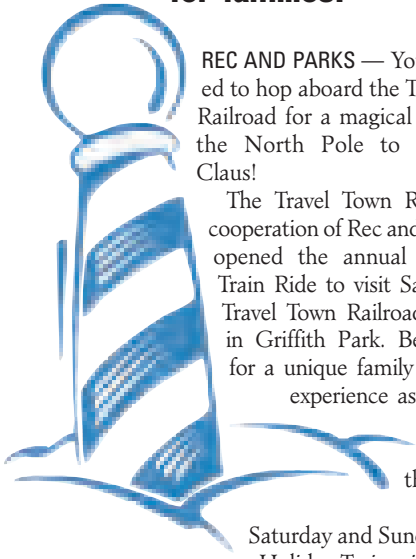
**Cost:** \$6 per person. Infants under 19 months are free.

## Travel to the North Pole!



Travel Town's holiday plans include marvelous lights.

### ■ Travel Town in Griffith Park offers a special holiday treat for families.



REC AND PARKS — You are invited to hop aboard the Travel Town Railroad for a magical journey to the North Pole to see Santa Claus!

The Travel Town Railroad, in cooperation of Rec and Parks, has opened the annual Christmas Train Ride to visit Santa at the Travel Town Railroad Museum in Griffith Park. Be prepared for a unique family Christmas experience as you ride our train through enchanting, decorated scenes on a journey to Santa's house!

The Christmas Train Ride to Santa goes through Dec. 23.

Hours are from 5 until 8 p.m. every Friday, Saturday and Sunday through Dec. 10. Then, beginning Dec. 13, the Holiday Train will be open every evening through Dec. 23.

Cost is \$6 per person. Infants under 19 months are free.

The Travel Town Railroad is at the Travel Town Museum, 5200 Zoo Dr., just off the 134 Freeway at Forest Lawn.

For more information, call (818) 881-2586 or the ticket office at (323) 662-9678.



Guests at Travel Town can visit with Santa and his better half, Mrs. Claus.



This giant gingerbread house is part of the adventure at Travel Town.



A Christmas tree soars over the many visual treats as Travel Town celebrates the holidays.

## Victorian Christmas Experience

**What:** Victorian Christmas at the Banning Residence Museum

**Dates:** Through December.

**When:** Museum tours begin at 12:30, 1:30 and 2:30 p.m. Tuesday, Wednesday and Thursday; and 12:30, 1:30, 2:30 and 3:30 p.m. Saturday and Sunday. A \$5 donation is requested. The Museum Shop is open during public tour hours and special programs. The Museum is closed on national holidays.

**Where:** Banning Residence Museum, 401 East M St. in Wilmington. Phone: (310) 548-7777. E-mail: [visit@banningmuseum.org](mailto:visit@banningmuseum.org)

**Cost:** \$5 donation is requested.

## A Victorian Christmas

### ■ City's Banning Residence takes a step back in time to celebrate the holidays.

REC AND PARKS — When you step into the City-owned Banning Residence Museum in Wilmington for a holiday tour, you step back in time.

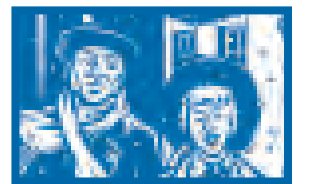
For Christmas, the residence, built in 1864, is fully decorated as it might have been when first built and in use by General Phineas Banning, who named the area after his childhood hometown of Wilmington, Del. Much research has been done to ensure that the museum will reflect realism in decor and display a re-creation of a Victorian Christmas.

There are a number of special events in very early December, and the residence will remain in its resplendent Victorian dressings throughout December.

Museum tours begin at 12:30, 1:30 and 2:30 p.m. Tuesday, Wednesday and Thursday; and 12:30, 1:30, 2:30 and 3:30 p.m. Saturday and Sunday. A \$5 donation is requested. The Museum Shop is open during public tour hours and special programs. The Museum is closed on national holidays.

For group tours of 10 or more or special tour reservations, please call the Museum (310) 548-7777.

The Museum is a Rec and Parks facility and is operated in cooperation with Friends of Banning Museum.



Banning Residence Museum offers visitors a Victorian Christmas experience.



# Holiday Happenings



Reindeer visit the L.A. Zoo for the holidays.

ZOO – “Rudolph the Red-Nosed Reindeer” may be one of the most popular holiday stories, but it’s not often that you get to see a live reindeer in Southern California. This holiday season, come to the L.A. Zoo and visit with reindeer up close. Come see a display of reindeer antlers and learn how antlers shed and grow back each year.

In addition, on weekends through the end of the year, there will be holiday entertainment and fun crafts for the family. Santa Claus also will be on hand for photographs for a nominal fee. During Reindeer Romp, the L.A. Zoo Choo Choo will be available daily to give young visitors train rides for a nominal fee.

Also “for 14 nights, the Zoo’s front entrance complex will be transformed into Reindeer Romp Under the Stars. Extend the merriment after the DWP’s Festival of Lights and enjoy the Zoo’s holiday entertainment, crafts and activities, tasty snacks and, of course, reindeer!

**Reindeer Romp fun facts:**

- The Zoo’s visiting reindeer are named Bell, Jingle, Noel and Velvet.

- Reindeer are a unique species of deer in that both the males and females have antlers. In most deer species, only the male has antlers. Their antlers are shed and re-grown each year.

- At the Zoo, you will be able to make your very own reindeer antlers as a holiday keepsake!

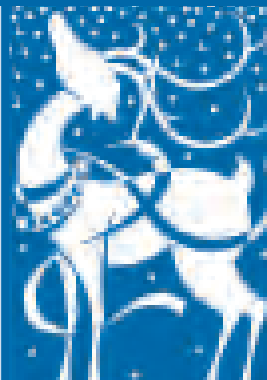
## It’s Raining Reindeer

- Four living, breathing reindeer make a special holiday visit at the Zoo as part of the annual Reindeer Romp.

- Reindeer have hollow hair, which provides good insulation for those chilly North Pole winters.

**Don’t miss all the fun this season at the Zoo!**

**Reindeer Romp at the L.A. Zoo**

<b>What:</b>	Reindeer Romp at the L.A. Zoo, to celebrate the holidays and give visitors a rare Southern California glimpse of this impressive animal.	
<b>Dates:</b>	Through Jan. 1; closed Dec. 25	
<b>When:</b>	10 a.m. to 5 p.m. daily; Reindeer Romp Under the Stars, until closing	
<b>Where:</b>	Los Angeles Zoo and Botanical Gardens, 5333 Zoo Dr., Griffith Park	
<b>Cost:</b>	\$10 adults, \$5 children 2 to 12. Most Reindeer Romp activities are free with paid admission. Reindeer Romp Under the Stars admission might be higher.	

For more information, visit the Zoo Website at [www.lazoo.org](http://www.lazoo.org) or call (323) 644-4200.



## Christmas Tree in Leimert Park

- Three departments come together to sponsor a festive Christmas tree in Leimert Park.

The attraction is sponsored by Councilman Bernard Parks, Rec and Parks, and the DWP. Outside sponsors include the Leimert Park Merchants Association.

The festive tree is in Leimert Park Village on W. 43rd Place, between Crenshaw Boulevard and Leimert Boulevard.

The tree was lit in a community celebration Nov. 27.

It's Party Pix Time

Hey Club Members:

## Alive! wants to go to your office holiday party!

Hey Club Members: Alive! wants to go to your office holiday party, if we can!

Is your office having a holiday party? Let us know, and we’ll do our best to publish a story and photos from your celebration!

We know there are lots of parties already scheduled. We’ll do our best to get to as many as we can, but we can’t guarantee it. Let us know.



Contact your Club Counselor. Look inside this issue of Alive! to identify your Counselor. Or drop an e-mail to Michelle Moreno, the Club’s Events Guru, at [michelleonthemove@cityemployeesclub.com](mailto:michelleonthemove@cityemployeesclub.com)

If we can’t make it, send in your own photos, along with a paragraph or two about where and when it was held. Send them to: [talkback@cityemployeesclub.com](mailto:talkback@cityemployeesclub.com)



See you at the party!

