



## John's Picture Perfect Contest

**WIN \$50**  
Walmart Gift Card

### For September, we have four winners!

Start snapping today, and send us your best results! Three winners will receive a \$50 Walmart gift card.

**Four PRIZES**

NEXT DEADLINE:  
**September 15**

Happy Snapping!



"After 40 minutes and 30 pictures with my new digital camera (Canon PowerShot SD700 IS), I finally got this unbelievable picture of a hummingbird in my front yard before a car drove by and scared it away. The camera was barely two feet away in this shot. Patience and luck certainly pay off big this time."

**- Cuong Nguyen, Systems Programmer, ITA.**

**John's comments:** "Did you know that the hummingbird is the only bird that can fly backwards or vertical? And not only that, they are the smallest birds on the planet! Which makes it just that more difficult to take a picture of. This is a great shot, Cuong! I really liked the low angle you took used, and it's rather nice to see a hummingbird be still for once."

"I was at a friends' house that had this hummingbird nest with two new babies. What's amazing is the nest was made right there on a hanging on the back porch. These hummers are about two weeks old."

**- Gwendolyn Lew, Bishop Power Office, DWP.**

**John's comments:** "Hummingbirds seem to be real popular this month! I've seen many nests in my life, but never a hummingbird nest. Great shot, Gwendolyn!"



"Sunset in Oceanside, Calif."

**- Ronald Angst, DWP.**

**John's comments:** "My favorite part of this photo is the birds. They seem very content, so peaceful ... just standing there, enjoying the cool ocean breeze while looking for crabs or whatever. Ahh, the life of a seabird."

"This photo was taken using a Olympus C-8080 from the entryway into the Pantheon in Rome at approximately 12:30 p.m. June 26 by myself," Debbie writes. "The Pantheon is a building in Rome that was begun in 27 BC by the statesman Marcus Vipsanius Agrippa, probably as a building of the ordinary classical temple type - rectangular with a gabled roof supported by a colonnade on all sides. It was completely rebuilt by the emperor Hadrian sometime between AD 118 and 128, with some alterations made in the early third century by the emperors Lucius Septimius Severus and Caracalla. It is a circular building of concrete faced with brick, with a great concrete dome rising from the walls and with a front porch of Corinthian columns supporting a gabled roof with triangular pediment."

**- Debbie DiPrimio.**

**John's comments:** "Many moons ago, I too paid a visit to the Pantheon in Rome; however, the pictures I took pale in comparison to yours, Debbie. In your shot, the lighting is simply 'perfitto,' and the location and angle give you the perspective needed to fully appreciate the architecture. This is truly a picture for framing! Buono!"



#### Runners Up:

Angie delos Santo, DWP, Anna Burton, Karl Guder

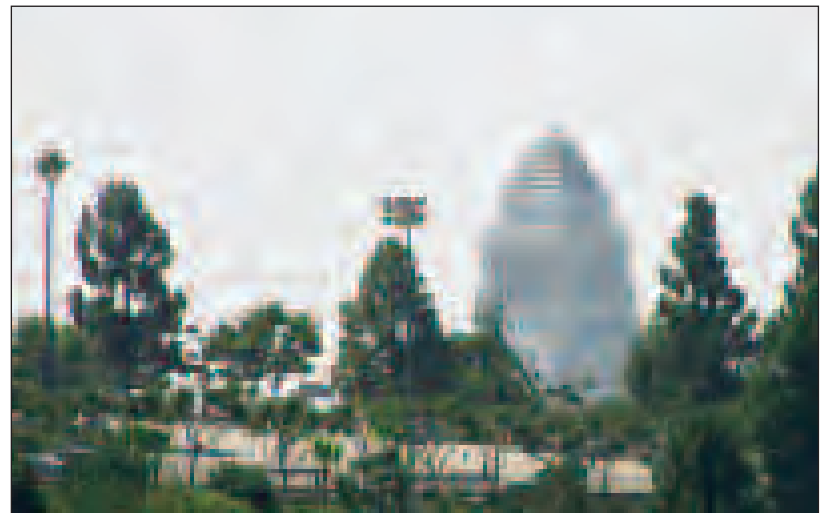
#### Rules:

- The contest is open to all Club members in good standing. Non-members are welcome to submit, but only Club members are eligible to win the monthly prize.
- If your photograph does not win, you are welcome to re-submit.
- Winners are chosen by Club staff. All decisions will be final.
- You must certify (if asked) that you indeed took the picture. No ringers!
- Photos can be submitted either on paper or digitally. Please don't send both.
- If you want your print photo returned, please write your name, address and phone number on the back of your photo.
- Photos can be of any subject matter: vacation, portraits, families, landscapes, still lifes, pets, etc. Subject matter must be appropriate for *Alive!*
- Paper prints can be mailed to: Picture Perfect Contest, *Alive!*, City Employees Club of Los Angeles, 350 S. Figueroa St., Suite 700, Los Angeles, CA 90071
- Digital photos optimally should be between 100K and 2 megabytes in size and may be e-mailed to: pictureperfect@cityemployeesclub.com
- The contest is all in good fun: The Club cannot be responsible for delays in delivering *Alive!*, or for delays in the transmission of responses.

# Where Was This Photo Taken?

Take a guess, and have fun answering:

## Where Was This Photo Taken?



Using this photo as a guide, answer the following questions:

- In detail, describe the location where this photo was taken.
- On which street is this?
- If the camera looked in the exact opposite direction, what would it see?

Whoever answers these questions with the most detail and accuracy wins:



**Second Prize:**  
a \$25 Trader Joe's gift card.  
**Third Prize:**  
a \$25 Trader Joe's gift card.

#### BONUS QUESTION:

Give us the GPS coordinates of where the camera was located when the photo was taken, and win an additional \$25 gift certificate to Trader Joe's!

DEADLINE **Sept. 15**

#### Here are the rules:

- Winning contestants must be Club members in good standing. Everyone is welcome to submit responses, however. (Responses without Club membership numbers will be accepted but not eligible for the winning prize.)
- Responses can be delivered by mail, fax, e-mail or in person (phone responses will not be accepted). E-mail address: talkback@cityemployeesclub.com
- Winning responses will be determined by official Club personnel. All decisions will be final.
- The contest is all in good fun: The Club cannot be responsible for delays in delivering *Alive!*, or for delays in the transmission of responses.

### The winner of last month's *Where Was This Photo Taken?* contest is: Ken Moody, ITA

#### Here's his response:

"This month's photo was taken on Main Street between Second and Third Streets next to parking meter #1281. The parking meter is located next to Pit Fire Pizza, 108 W. 2nd St.

"On July 29, 2003, the Los Angeles City Council designated the area as Gallery Row. The official unveiling ceremony was on May 15, 2004. If you were to look in almost the opposite direction from where this photo was taken, you would be looking at the old St. Vibiana's Cathedral. It is now a community arts center with the name Vibiana Place."



**Bonus Question Winner:** Ken Moody, ITA, Club Member  
The G.P.S. coordinates of the "Gallery Row" sign are: 34°03'055"N, 118°14'643"W