

Wear Your Pride!
City Logo Shirts
 See page 43



SERVING OVER 17,000 CITY AND DWP EMPLOYEES



ClubFest Bands: Party Grooves For Everybody

■ Bands offer fun grooves for all tastes to enhance party.

THE CLUB — What kind of party music do you like? Rock? Blues? Funk? Latin? Soul? R&B? Well then, get ready to tap your feet, clap your hands and treat your soul at ClubFest.

The Club added live music to last year's ClubFest, and the added bonus was such a hit that music is a big part of this year's ultimate party, too.

Featured at ClubFest this year are three bands: Jamnesia, playing party jams; Latin Gents, cranking up



ClubFest
October 1, 2006
 - See page 21 for details -

- See ClubFest Bands, Page 24

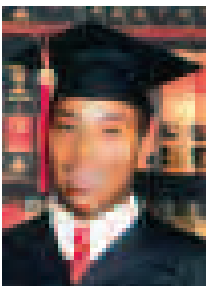
Top Students Awarded Club Scholarships

■ Club's expanded scholarship program awards Club family members with great potential.

THE CLUB — "I understand that being a leader is more than a title, it is a lifestyle," writes soon-to-be college freshman Irvin Shannon. "I must not only hold leadership positions, but my actions must be indicative of one who is deserving of respect and capable of making a lasting impact."

That's the kind of winning outlook that won the Club's top scholarship for Irvin, the son of Club Member Shelia Shannon, Payroll Supervisor, Street Services (Public Works).

Irvin receives a stipend of \$3,500 to encourage his further study, which he will be doing at Howard University in Washington, D.C., in the fall.



Irvin Shannon, First Place Club Scholarship winner.

- See Club Scholarship, Page 13



Summer Lights


Celebrate easy summer days with a visit to the beautifully restored Point Fermin Lighthouse in San Pedro.

This Rec and Parks facility overlooking the blue Pacific offers informative and enjoyable tours for the whole family.

See Page 11.

Kristen Childs, Historic Site Curator and City employee, welcomes fellow City employees - and everyone - to the lighthouse.

PHOTO: Angel Gomez, Member Services Manager, The Club



City Employees Club of Los Angeles
 350 S. Figueroa St., Suite 700
 Los Angeles, CA 90071
 CHANGE SERVICE REQUESTED

PRSR STD
 US POSTAGE
PAID
 Permit #30391
 Los Angeles, CA

Buy Discounted Tickets Online!

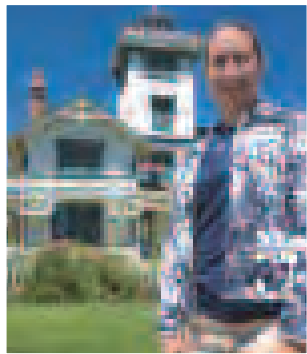
Easy, fast...
 and with that great Club discount.
 See page 42 for details or go to
www.cityemployeesclub.com





City gem: Point Fermin Lighthouse

■ This City gem is a perfect destination for an easy, end-of-summer day.



REC AND PARKS — A treasure from the Victorian era offers a peek into the City's past ... and a great view of the Pacific and the Harbor.

The Point Fermin Lighthouse, which dates from 1874 and had been closed to the public, underwent a major restoration in 2002 and reopened the following year. Tours are offered most afternoons (except Mondays).

Kristen Childs, Historic Site Curator and City employee, welcomes fellow City employees – and everyone – to the lighthouse. With Point Fermin Park surrounding the lighthouse and great views of the ocean and Harbor area from its observation room, the lighthouse is a great family destination for a summer daytrip.

Restoration efforts were spurred on in the 1960s by Coast Guard plans to tear down the lighthouse. San Pedro residents William Olesen and John Olguin spearheaded the restoration of the lighthouse to its original appearance, based upon blueprints provided by the Coast Guard.

The lighthouse, one of the oldest light stations on the West Coast, was built on a hilltop west of Pacific Avenue at Gaffey Street and Paseo Del Mar. Built in 1874 as a beacon to ships in one of the nation's busiest ports, the lighthouse no longer contains a functioning

light beacon, although it did for many decades. When Pearl Harbor was attacked in 1941, the threat became very real that the West Coast could be next. The Navy seized the lighthouse and dismantled the lantern room as well as removing the lens. They constructed a look-out tower, which served the war effort for several years.

The Victorian building in which it was housed was constructed of bricks with a wood frame and contained a cupola where the lens was mounted. Bricks and lumber shipped around Cape Horn were used to build the station and three cisterns.

Rec and Parks contracted with the federal Lighthouse Service in 1927 to operate the facility, and the house became the residence of a superintendent.

HOURS OF OPERATION

The lighthouse is open from 1 to 4 p.m. every day except Monday, when it is closed.

Lighthouse tours:

Tuesday:	1, 2, 3 p.m.
Wednesday:	1, 2, 3 p.m.
Thursday:	1, 2, 3 p.m.
Friday:	1, 2, 3 p.m.
Saturday:	1, 2, 3 p.m.
Sunday:	1, 1:30, 2, 2:30, 3:30 p.m.

Point Fermin Lighthouse
807 Paseo Del Mar
San Pedro, CA 90731
(310) 241-0684

Help protect your family and home with **BRINKS HOME SECURITY**

- You could Save Up to 20% on Homeowners Insurance
- Dedicated to Rapid Response and Peace of Mind

Call Now!
1-800-826-8188

Standard System Installation ONLY \$49*

Plus call today and receive a

FREE

Smoke/Heat Detector Installation

1-855-826-8188

*Call for information on Brink's monitoring fees and other terms. OFFER REQUIRES SIGNING UP TO BRINK'S HOME SECURITY 3-YEAR PLAN. Three-year monitoring agreement required. Applicable fees not shown here per contract. Offer may not be combined with any other discount and is subject to change. Home ownership and credit approval required. Home must be insured by a Brink's-approved insurer. The Best Buy call is a promotion of Brink's Home Security, Digital Communications, LLC, and is not an endorsement of Brink's Home Security. ©2006 Brink's Home Security, LLC. All rights reserved. Offer ends July 31, 2006.

Call Antonio Cervantes!
1-800-826-8188