

# John's Picture Perfect Contest

## Introducing *Alive!*'s Picture Perfect Contest

Do you have a favorite snapshot that you've taken? Send it in to Club CEO John Hawkins, and you could win!

Every month we'll pick a winning shot. The winning photographer will receive a \$50 gift certificate.

Every issue will have a submission deadline, but you can enter in any month ... and re-enter if your photograph was not chosen.

"I can't wait to see your great photos," John says. "Go ahead: Impress me!"

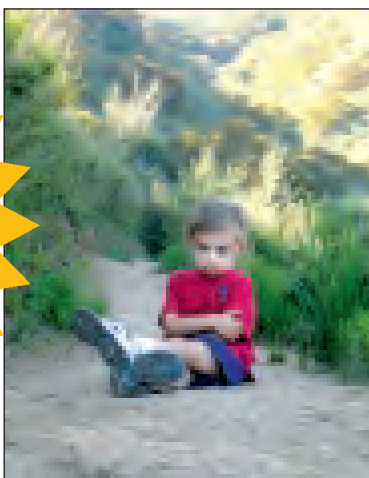
Read the rules below to the left, and happy snapping!

Next month's Deadline:  
February 10

**WIN \$50**  
Best Buy  
gift certificate

### Photo Contest Rules:

- The contest is open to all Club members in good standing. Non-members are welcome to submit, but only Club members are eligible to win the monthly prize.
- If your photograph does not win, you are welcome to re-submit.
- Winners are chosen by Club staff. All decisions will be final.
- You must certify (if asked) that you indeed took the picture. No ringers!
- Photos can be submitted either on paper or digitally. Please don't send both.
- If you want your print photo returned, please write your name, address and phone number on the back of your photo.
- Photos can be of any subject matter: vacation, portraits, families, landscapes, still lifes, pets, etc. Subject matter must be appropriate for *Alive!*
- Paper prints can be mailed to: Picture Perfect Contest, *Alive!*, City Employees Club of Los Angeles, 350 S. Figueroa St., Suite 700, Los Angeles, CA 90071
- Digital photos optimally should be between 100K and 2 megabytes in size and may be e-mailed to: pictureperfect@cityemployeesclub.com
- The contest is all in good fun: The Club cannot be responsible for delays in delivering *Alive!*, or for delays in the transmission of responses.



**A New Contest!**

**Photo Contest**

Have you been thinking about...

## LONG TERM Care INSURANCE?



### Call the people you can trust:

The City Employee Club of Los Angeles. We have been offering the highest quality group rated insurance plans exclusively to active and retired City employees for over 75 years.

- Group Rated
- Pension/Payroll Deducted
- Rates Are Locked

Call today for your free information kit on how the City Employees Club of Los Angeles can help you choose the right Long Term Care plan for you.



**1-800-464-0452**

Don't wait another day. Start preserving your assets today!

City Employees Club of Los Angeles  
World Trade Center • 350 South Figueroa Street, Suite 700 • Los Angeles, CA 90071

## LAFCU Can Visit You at Work!



Departments or divisions of L.A. City can have an on-site visit by a Los Angeles Federal Credit Union representative. We can participate in new hire orientations, benefit fairs, or open-enrollment sessions. Employees will have an opportunity to:

- Ask Questions
- Sign up for direct deposit or payroll deduction
- Fill out loan applications
- Receive information on LAFCU's services
- Sign up to become a member - on the spot!

Contact Billie Vuckovich, Business Development Associate  
Ext. 457 • (213) 484-8640 • (818) 242-8640  
(800) 252-4009 (outside local areas)

**LAFCU** Los Angeles Federal Credit Union  
10000 Wilshire Blvd., Suite 1000, Beverly Hills, CA 90210  
Member FDIC

